

BRUSHED DC MOTORS | Ø 27.8 - 52 mm 0.7 - 200 W

MULTI-SERIES

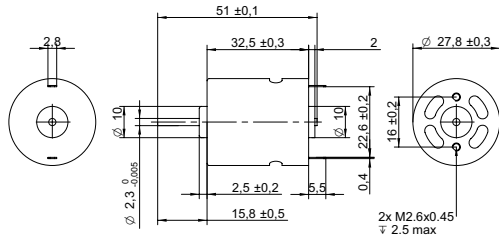
We offer a broad range of high quality brushed DC motors in standard and customized configurations. Our customer-centric approach makes us the ideal supplier for your project, especially to instrument and apparatus builders. In addition, we offer immediate delivery, thanks to always having a high number of motors in stock.

Customizations include:

- ✓ Customized harness
- ✓ Winding configuration
- ✓ Shaft configuration
- ✓ And more...

MODEL SERIES	DIAMETER mm	LENGTH mm	NOMINAL VOLTAGE V	NOMINAL POWER W	PAGE
M_3N series	27.8	32.5	3.6 - 6	4.2 - 12	1
M_5N series	27.8	32.5	12 - 24	1.2 - 12	2
M_3FN series	27.8	32.2	6 - 9.6	1.3 - 14	3
M_5FN series	27.8	32.2	6 - 24	1.7 - 2.9	4
M_5-AA series	27.8	32.5	12 - 24	10 - 21	5
M_5-BB series	27.8	32.5	6 - 12	4.2 - 13	6
L_5-DD series	27.5	37.8	12	19	7
L_3N series	29.2	37.8	6 - 12	0.7 - 8.9	8
L_5N series	29.2	37.8	12	6.9	9
L_3FN series	29.2	37.5	4 - 14	0.7 - 28	10
L_5FN series	29.2	37.5	2.4 - 24	1.7 - 24	11
J_3 series	30	46.6	7.2 - 12	1.5 - 39	12
J_5 series	30	46.6	6 - 24	7.2 - 19	13
J_3FN series	29.2	46.5	3.6 - 9.6	19 - 52	14
J_5FN series	29.2	46.5	6 - 30	2.6 - 25	15
GR series	32	29	2.4 - 24	2.8 - 3.2	16
H_3SFN series	36	49	4.8 - 12	3.3 - 67	17
H_5FN series	36	49	12 - 24	2.8 - 28	18
H_3SN series	36	50.1	12	3.8 - 44	19
K_3N series	38	57.1	7.2 - 12	9.6 - 51	20
K_5N series	38	57.1	6 - 24	5.4 - 15	21
K_3SFN series	38	57	6 - 12	46 - 95	22
N_3SFN series	38	65	12	19 - 52	23
N_5FN series	38	65	12 - 36	12 - 51	24
K_5FN series	39	57	12 - 28	4.6 - 120	25
755 series	42.4	59	9.6 - 36	14 - 140	26
770 series	45	66	12 - 24	21 - 110	27
775 series	45	66	7.2 - 24	100 - 200	28
987 series	52	69	12 - 24	35 - 110	29

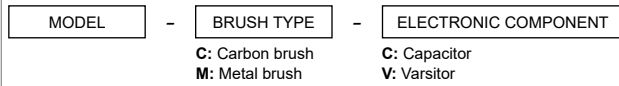
DRAWING (mm)



PHOTO



MODEL NO. DESIGNATION



Example: MD3N-3745-CVC

OPTIONS POWER SUPPLIES



● C = customizations are offered on demand even for smaller quantities. Typical customizations are indicated with a green dot at column end. Please contact us for any customization request.

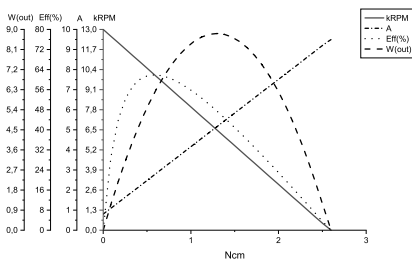
MOTOR DATA

Model number		MD3N-3745-CVC	MP3N-2495-CVC	MS3N-2880-CVC	MP3N-3260-CVC	
Diameter	mm	27.8	27.8	27.8	27.8	
Length	mm	32.5	32.5	32.5	32.5	
Nominal voltage	V	3.6	6	6	6	●
No load current	A	0.8	0.3	0.35	0.55	●
Nominal current	A	2.6	1.2	1.6	3.4	●
Start/Stall current	A	9.5	5.8	8.2	15	●
No load speed	rpm	13000	9800	12000	15000	●
Nominal speed	rpm	9900	8000	9900	12200	●
Nominal torque	mNm	5.4	4.9	5.6	9.6	●
Start/Stall torque	mNm	26	30	36	51	●
Nominal power	W	5.7	4.2	5.9	12	●
Efficiency	%	61	60	64	62	

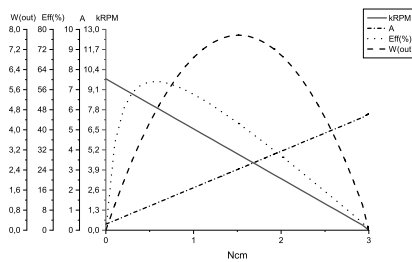
COMMON MOTOR DATA

Shaft diameter	mm	2.3
Number of pole pairs		1
Number of commutator segments		3
Weight	g	69
Service life	hrs	500 to 1000
Operating temperature	°C	-10 to +60
Housing material		Galvanized steel
Shaft material		High-carbon steel
Magnet material		Ferrite
IP rating		IP40
Motor insulation class		Level A

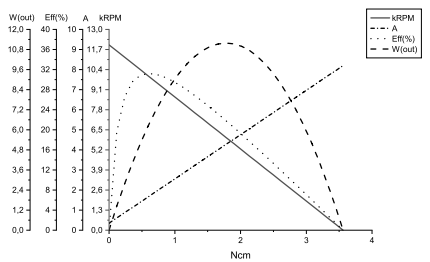
MOTOR DATA GRAPH - MD3N-3745-CVC



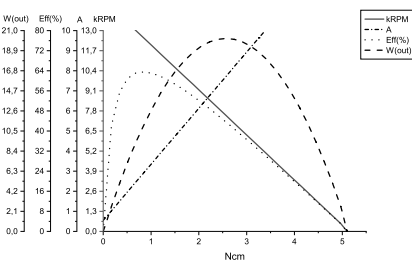
MOTOR DATA GRAPH - MP3N-2495-CVC



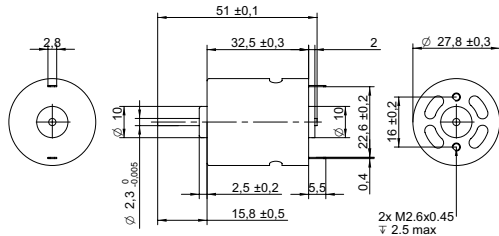
MOTOR DATA GRAPH - MS3N-2880-CVC



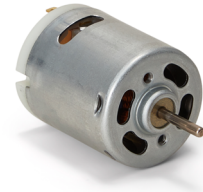
MOTOR DATA GRAPH - MP3N-3260-CVC



DRAWING (mm)



PHOTO



MODEL NO. DESIGNATION

MODEL	-	BRUSH TYPE	-	ELECTRONIC COMPONENT
		C: Carbon brush M: Metal brush		C: Capacitor V: Varsitor

Example: MS5N-2365-CVC

OPTIONS POWER SUPPLIES



● C = customizations are offered on demand even for smaller quantities. Typical customizations are indicated with a green dot at column end. Please contact us for any customization request.

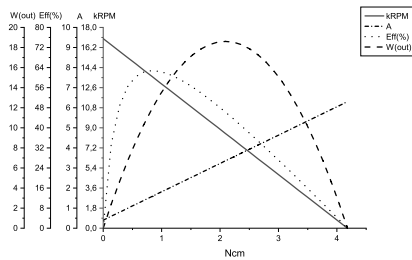
MOTOR DATA

				C
Model number		MS5N-2365-CVC	MP5N-08360-CVC	MP5N-12190-CVC
Diameter	mm	27.8	27.8	27.8
Length	mm	32.5	32.5	32.5
Nominal voltage	V	12	24	24
No load current	A	0.4	0.05	0.1
Nominal current	A	1.7	0.1	0.4
Start/Stall current	A	6.3	0.3	1.2
No load speed	rpm	17000	4800	10000
Nominal speed	rpm	12000	3500	7800
Nominal torque	mNm	9.1	3.2	6
Start/Stall torque	mNm	42	13	26
Nominal power	W	11	1.2	4.9
Efficiency	%	58	42	59

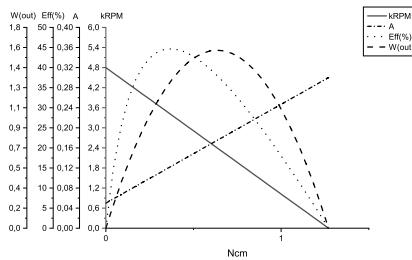
COMMON MOTOR DATA

				C
Shaft diameter	mm		2.3	●
Number of pole pairs			1	
Number of commutator segments			5	
Weight	g		69	
Service life	hrs		500 to 1000	
Operating temperature	°C		-10 to +60	●
Housing material			Galvanized steel	
Shaft material			High-carbon steel	●
Magnet material			Ferrite	
IP rating			IP40	
Motor insulation class			Level A	●

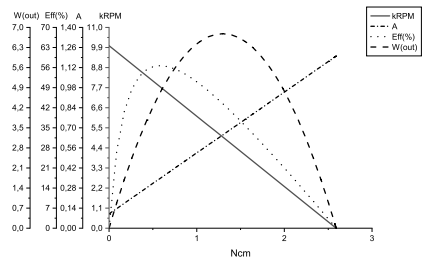
MOTOR DATA GRAPH - MS5N-2365-CVC



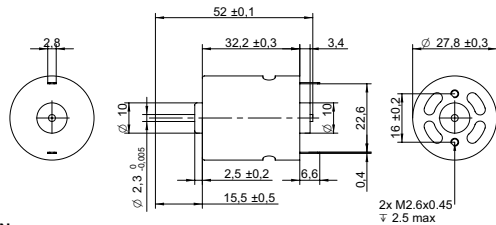
MOTOR DATA GRAPH - MP5N-08360-CVC



MOTOR DATA GRAPH - MP5N-12190-CVC



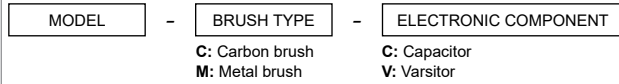
DRAWING (mm)



PHOTO



MODEL NO. DESIGNATION



Example: MS3FN-18180-CVC

OPTIONS POWER SUPPLIES

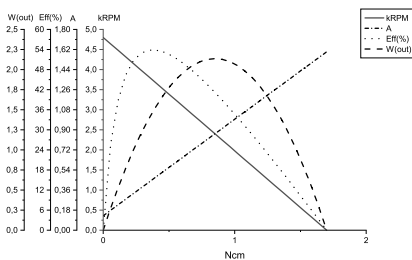


● C = customizations are offered on demand even for smaller quantities. Typical customizations are indicated with a green dot at column end. Please contact us for any customization request.

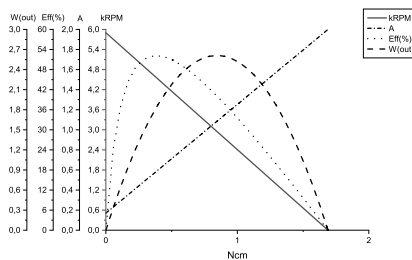
MOTOR DATA					C
Model number		MS3FN-18180-CVC	MS3FN-19145-CVC	MD3FN-3270-CVC	MP3FN-2885-CVC
Diameter	mm	27.8	27.8	27.8	27.8
Length	mm	32.2	32.2	32.2	32.2
Nominal voltage	V	6	6	7.2	9.6
No load current	A	0.13	0.17	0.55	0.45
Nominal current	A	0.4	0.6	2.1	2.4
Start/Stall current	A	1.6	2	10	11
No load speed	rpm	4800	5900	15000	16000
Nominal speed	rpm	3700	4300	12000	13000
Nominal torque	mNm	3.5	3.9	7.4	10
Start/Stall torque	mNm	17	17	43	59
Nominal power	W	1.3	1.8	9.3	14
Efficiency	%	59	53	61	62

COMMON MOTOR DATA					C
Shaft diameter	mm	2.3			●
Number of pole pairs		1			
Number of commutator segments		3			
Weight	g	76			
Service life	hrs	500 to 1000			
Operating temperature	°C	-10 to +60			●
Housing material		Galvanized steel			
Shaft material		High-carbon steel			●
Magnet material		Ferrite			
IP rating		IP40			
Motor insulation class		Level A			●

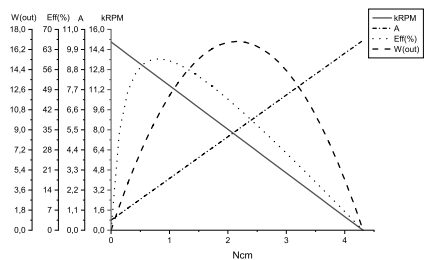
MOTOR DATA GRAPH - MS3FN-18180-CVC



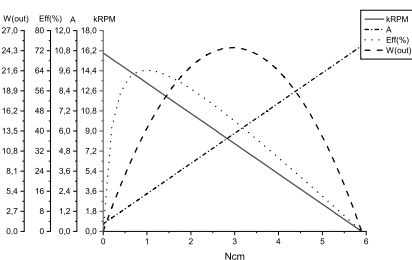
MOTOR DATA GRAPH - MS3FN-19145-CVC



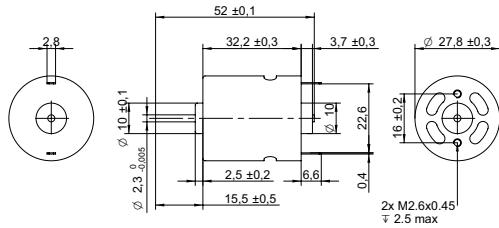
MOTOR DATA GRAPH - MD3FN-3270-CVC



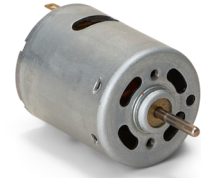
MOTOR DATA GRAPH - MP3FN-2885-CVC



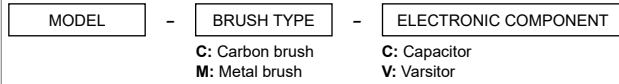
DRAWING (mm)



PHOTO



MODEL NO. DESIGNATION



Example: MP5FN-2080-CVC

OPTIONS POWER SUPPLIES



● C = customizations are offered on demand even for smaller quantities. Typical customizations are indicated with a green dot at column end. Please contact us for any customization request.

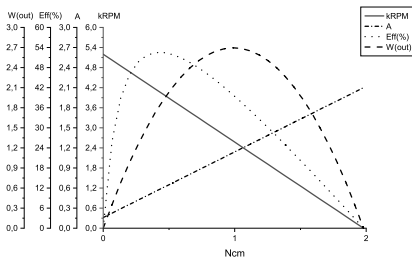
MOTOR DATA

Model number	MP5FN-2080-CVC	MP5FN-12185-CVC	MS5FN-16120-CVC	MS5FN-07420-CVC	C	
Diameter	mm	27.8	27.8	27.8	27.8	
Length	mm	32.2	32.2	32.2	32.2	
Nominal voltage	V	6	12	12	24	●
No load current	A	0.16	0.08	0.1	0.04	●
Nominal current	A	0.5	0.2	0.5	0.1	●
Start/Stall current	A	2.1	0.7	1.7	0.2	●
No load speed	rpm	5200	4800	7600	4300	●
Nominal speed	rpm	4000	3600	5800	3100	●
Nominal torque	mNm	4	3.1	4.7	2.6	●
Start/Stall torque	mNm	20	14	23	10	●
Nominal power	W	1.7	1.2	2.9	0.9	●
Efficiency	%	53	53	54	45	

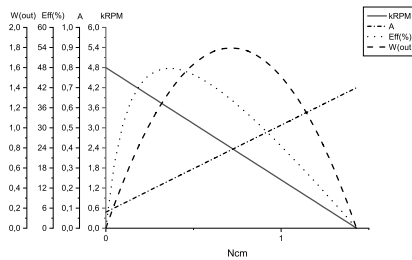
COMMON MOTOR DATA

Shaft diameter	mm	2.3	●
Number of pole pairs		1	
Number of commutator segments		5	
Weight	g	76	
Service life	hrs	500 to 1000	
Operating temperature	°C	-10 to +60	●
Housing material		Galvanized steel	
Shaft material		High-carbon steel	●
Magnet material		Ferrite	
IP rating		IP40	
Motor insulation class		Level A	●

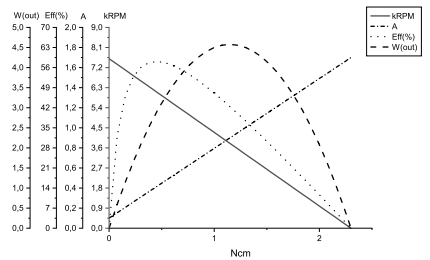
MOTOR DATA GRAPH - MP5FN-2080-CVC



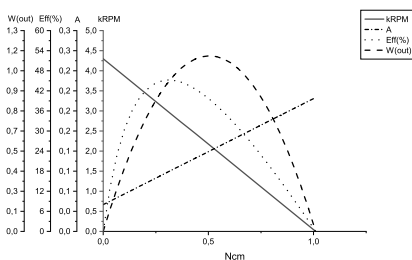
MOTOR DATA GRAPH - MP5FN-12185-CVC



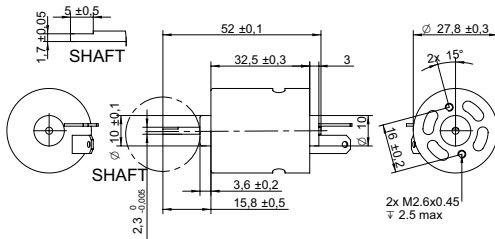
MOTOR DATA GRAPH - MS5FN-16120-CVC



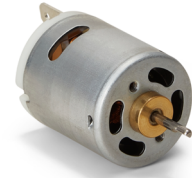
MOTOR DATA GRAPH - MS5FN-07420-CVC



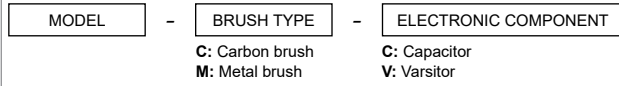
DRAWING (mm)



PHOTO



MODEL NO. DESIGNATION



Example: MD5-2554AS-AA-C

OPTIONS POWER SUPPLIES



● C = customizations are offered on demand even for smaller quantities. Typical customizations are indicated with a green dot at column end. Please contact us for any customization request.

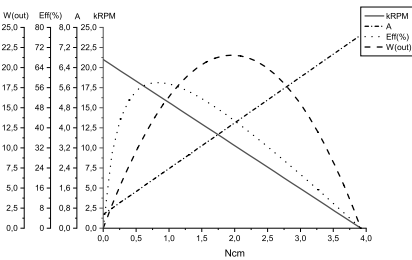
MOTOR DATA

Model number		MD5-2554AS-AA-C	MD5-2450AS-AA-C	MD5-15120AS-AA-CV	MD5-1980AS-AA-CV	C
Diameter	mm	27.8	27.8	27.8	27.8	
Length	mm	32.5	32.5	32.5	32.5	
Nominal voltage	V	12	12	24	24	●
No load current	A	0.55	0.6	0.24	0.4	●
Nominal current	A	1.7	2	0.7	1.4	●
Start/Stall current	A	7.7	7.4	2.9	5.9	●
No load speed	rpm	21000	22000	19000	27000	●
Nominal speed	rpm	17000	17000	15000	23000	●
Nominal torque	mNm	7.2	7.6	6.5	8.7	●
Start/Stall torque	mNm	39	35	33	46	●
Nominal power	W	13	14	10	21	●
Efficiency	%	62	56	62	61	

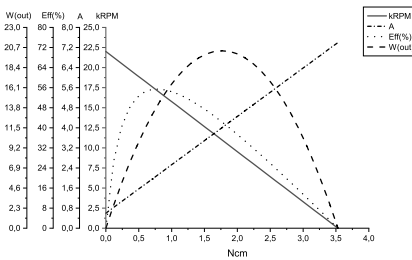
COMMON MOTOR DATA

Shaft diameter	mm	2.3	●
Number of pole pairs		1	
Number of commutator segments		5	
Weight	g	69	
Service life	hrs	500 to 1000	
Operating temperature	°C	-10 to +60	●
Housing material		Galvanized steel	
Shaft material		High-carbon steel	●
Magnet material		Ferrite	
IP rating		IP40	
Motor insulation class		Level A	●

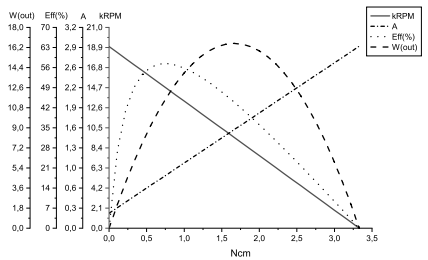
MOTOR DATA GRAPH - MD5-2554AS-AA-C



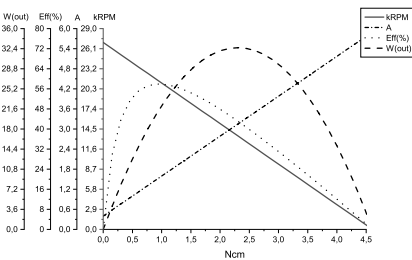
MOTOR DATA GRAPH - MD5-2450AS-AA-C



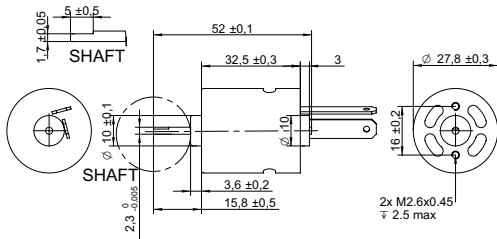
MOTOR DATA GRAPH - MD5-15120AS-AA-CV



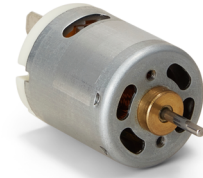
MOTOR DATA GRAPH - MD5-1980AS-AA-CV



DRAWING (mm)



PHOTO



MODEL NO. DESIGNATION

MODEL	-	BRUSH TYPE	-	ELECTRONIC COMPONENT
		C: Carbon brush M: Metal brush		C: Capacitor V: Varsitor

Example: MD5-2445AS-BB-C

OPTIONS POWER SUPPLIES

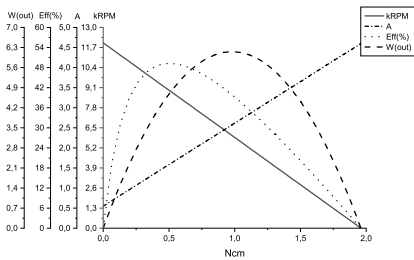


● C = customizations are offered on demand even for smaller quantities. Typical customizations are indicated with a green dot at column end. Please contact us for any customization request.

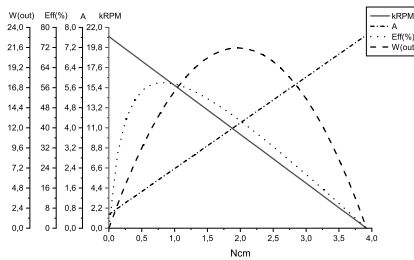
MOTOR DATA				C
Model number		MD5-2445AS-BB-C	MD5-2554AS-BB-C	
Diameter	mm	27.8	27.8	
Length	mm	32.5	32.5	
Nominal voltage	V	6	12	●
No load current	A	0.55	0.55	●
Nominal current	A	1.4	1.7	●
Start/Stall current	A	4.6	7.7	●
No load speed	rpm	12000	21000	●
Nominal speed	rpm	9300	17000	●
Nominal torque	mNm	4.4	7.2	●
Start/Stall torque	mNm	20	39	●
Nominal power	W	4.2	12	●
Efficiency	%	50	62	

COMMON MOTOR DATA				C
Shaft diameter	mm	2.3		●
Number of pole pairs		1		
Number of commutator segments		5		
Weight	g	69		
Service life	hrs	500 to 1000		
Operating temperature	°C	-10 to +60		●
Housing material		Galvanized steel		
Shaft material		High-carbon steel		●
Magnet material		Ferrite		
IP rating		IP40		
Motor insulation class		Level A		●

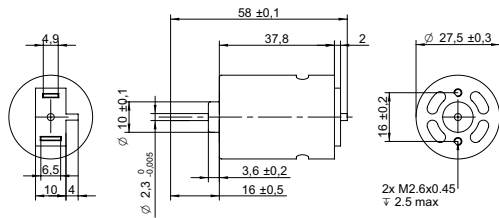
MOTOR DATA GRAPH - MD5-2445AS-BB-C



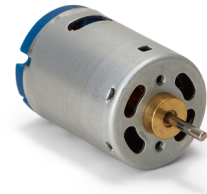
MOTOR DATA GRAPH - MD5-2554AS-BB-C



DRAWING (mm)



PHOTO



MODEL NO. DESIGNATION

MODEL	-	BRUSH TYPE	-	ELECTRONIC COMPONENT
		C: Carbon brush M: Metal brush		C: Capacitor V: Varsitor

Example: LD5-3033AS-DD-C

OPTIONS POWER SUPPLIES

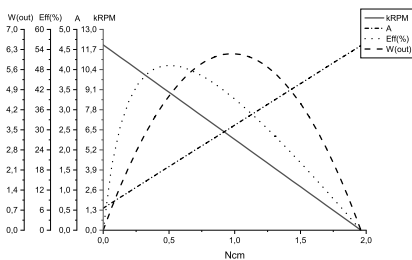


● C = customizations are offered on demand even for smaller quantities. Typical customizations are indicated with a green dot at column end. Please contact us for any customization request.

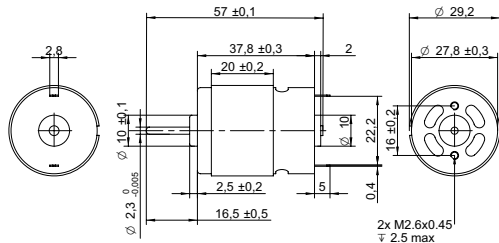
MOTOR DATA			C
Model number		LD5-3033AS-DD-C	
Diameter	mm	27.5	
Length	mm	37.8	
Nominal voltage	V	12	●
No load current	A	0.7	●
Nominal current	A	2.6	●
Start/Stall current	A	10	●
No load speed	rpm	26000	●
Nominal speed	rpm	19800	●
Nominal torque	mNm	9.1	●
Start/Stall torque	mNm	43	●
Nominal power	W	19	●
Efficiency	%	62	

COMMON MOTOR DATA			C
Shaft diameter	mm	2.3	●
Number of pole pairs		1	
Number of commutator segments		5	
Weight	g	96	
Service life	hrs	500 to 1000	
Operating temperature	°C	-10 to +60	●
Housing material		Galvanized steel	
Shaft material		High-carbon steel	●
Magnet material		Ferrite	
IP rating		IP40	
Motor insulation class		Level A	●

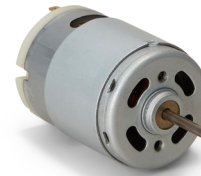
MOTOR DATA GRAPH - LD5-3033AS-DD-C



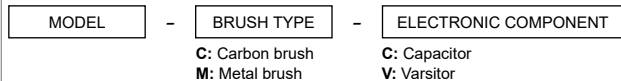
DRAWING (mm)



PHOTO

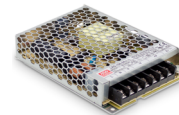


MODEL NO. DESIGNATION



Example: LP3N-18200-CVC

OPTIONS POWER SUPPLIES



● C = customizations are offered on demand even for smaller quantities. Typical customizations are indicated with a green dot at column end. Please contact us for any customization request.

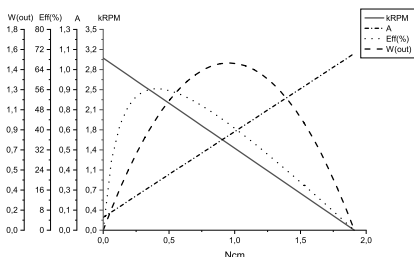
MOTOR DATA

Model number	LP3N-18200-CVC	LS3N-3558-CVC	LS3N-2870-CVC	LP3N-14350-CVC	C	
Diameter	mm	29.2	29.2	29.2		
Length	mm	37.8	37.8	37.8		
Nominal voltage	V	6	6	7.2	12	●
No load current	A	0.08	0.4	0.32	0.06	●
Nominal current	A	0.2	2.2	1.7	0.2	●
Start/Stall current	A	1.1	13	7.9	0.8	●
No load speed	rpm	3000	11000	10000	3200	●
Nominal speed	rpm	2400	8800	8400	2600	●
Nominal torque	mNm	2.8	9.6	9.2	5.2	●
Start/Stall torque	mNm	19	66	51	26	●
Nominal power	W	0.7	8.9	8.3	1.4	●
Efficiency	%	61	68	66	57	

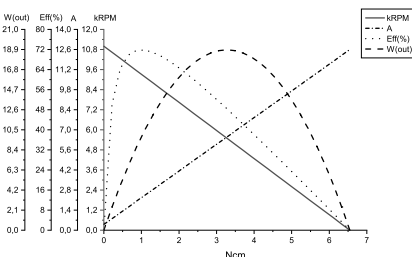
COMMON MOTOR DATA

Shaft diameter	mm	2.3	●
Number of pole pairs		1	
Number of commutator segments		3	
Weight	g	99	
Service life	hrs	500 to 1000	
Operating temperature	°C	-10 to +60	●
Housing material		Galvanized steel	
Shaft material		High-carbon steel	●
Magnet material		Ferrite	
IP rating		IP40	
Motor insulation class		Level A	●

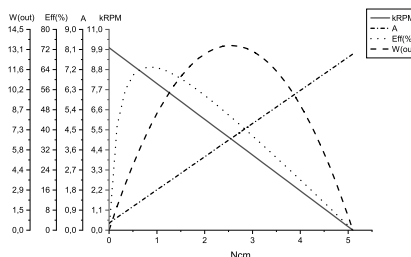
MOTOR DATA GRAPH - LP3N-18200-CVC



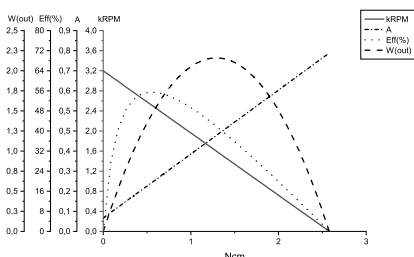
MOTOR DATA GRAPH - LS3N-3558-CVC



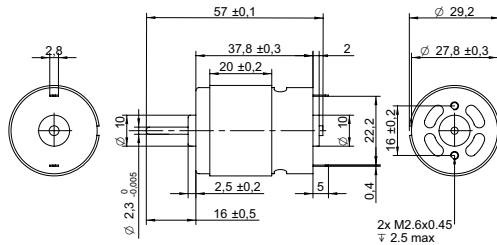
MOTOR DATA GRAPH - LS3N-2870-CVC



MOTOR DATA GRAPH - LP3N-14350-CVC



DRAWING (mm)



MODEL NO. DESIGNATION

MODEL	-	BRUSH TYPE	-	ELECTRONIC COMPONENT
		C: Carbon brush M: Metal brush		C: Capacitor V: Varsitor

Example: LP5N-2268-CVC

PHOTO



OPTIONS POWER SUPPLIES

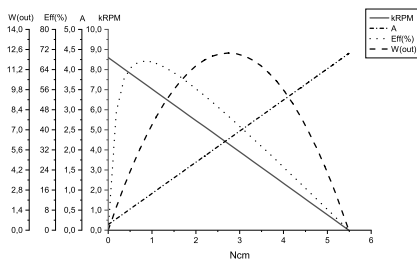


● C = customizations are offered on demand even for smaller quantities. Typical customizations are indicated with a green dot at column end. Please contact us for any customization request.

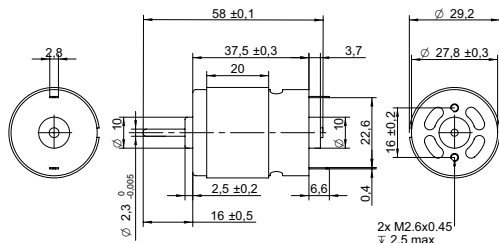
MOTOR DATA			C
Model number		LP5N-2268-CVC	
Diameter	mm	29.2	
Length	mm	37.8	
Nominal voltage	V	12	●
No load current	A	0.14	●
Nominal current	A	0.9	●
Start/Stall current	A	4.4	●
No load speed	rpm	8600	●
Nominal speed	rpm	7100	●
Nominal torque	mNm	9.1	●
Start/Stall torque	mNm	55	●
Nominal power	W	6.9	●
Efficiency	%	65	

COMMON MOTOR DATA			C
Shaft diameter	mm	2.3	●
Number of pole pairs		1	
Number of commutator segments		5	
Weight	g	99	
Service life	hrs	500 to 1000	
Operating temperature	°C	-10 to +60	●
Housing material		Galvanized steel	
Shaft material		High-carbon steel	●
Magnet material		Ferrite	
IP rating		IP40	
Motor insulation class		Level A	●

MOTOR DATA GRAPH - LP5N-2268-CVC



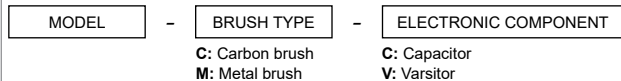
DRAWING (mm)



PHOTO

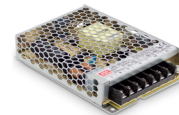


MODEL NO. DESIGNATION



Example: LD3FN-5015-CC

OPTIONS POWER SUPPLIES

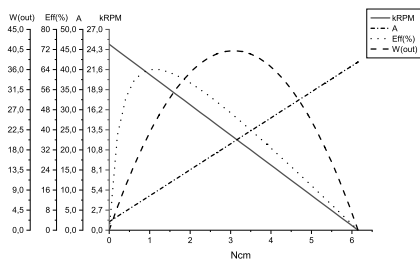


● C = customizations are offered on demand even for smaller quantities. Typical customizations are indicated with a green dot at column end. Please contact us for any customization request.

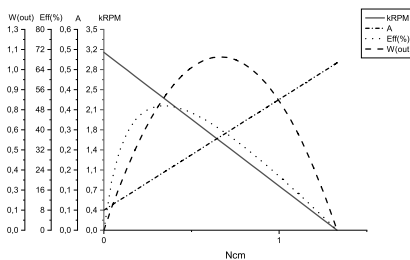
MOTOR DATA					C
Model number		LD3FN-5015-CC	LS3FN-12300-CVC	LS3FN-14280-CVC	LD3FN-26110-CVC
Diameter	mm	29.2	29.2	29.2	29.2
Length	mm	37.5	37.5	37.5	37.5
Nominal voltage	V	4	9.6	12	18
No load current	A	2.1	0.06	0.07	0.22
Nominal current	A	10.8	0.2	0.2	1.6
Start/Stall current	A	42	0.5	1	9.9
No load speed	rpm	25000	3100	4300	15000
Nominal speed	rpm	19900	2300	3400	13000
Nominal torque	mNm	13	3	4.1	15
Start/Stall torque	mNm	62	13	24	100
Nominal power	W	28	0.7	1.5	20
Efficiency	%	65	49	57	69

COMMON MOTOR DATA					C
Shaft diameter	mm	2.3			●
Number of pole pairs		1			
Number of commutator segments		3			
Weight	g	110			
Service life	hrs	500 to 1000			
Operating temperature	°C	-10 to +60			●
Housing material		Galvanized steel			
Shaft material		High-carbon steel			●
Magnet material		Ferrite			
IP rating		IP40			
Motor insulation class		Level A			●

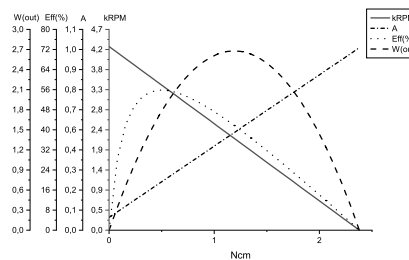
MOTOR DATA GRAPH - LD3FN-5015-CC



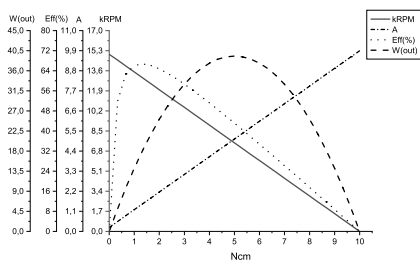
MOTOR DATA GRAPH - LS3FN-12300-CVC



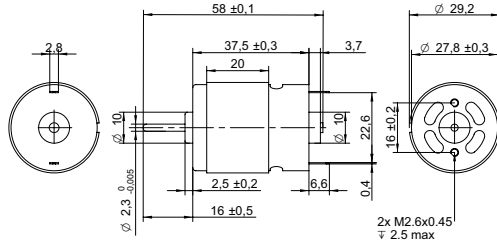
MOTOR DATA GRAPH - LS3FN-14280-CVC



MOTOR DATA GRAPH - LD3FN-26110-CVC



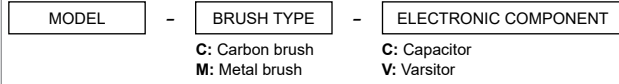
DRAWING (mm)



PHOTO



MODEL NO. DESIGNATION



Example: LS5FN-3019-CVC

OPTIONS POWER SUPPLIES



● C = customizations are offered on demand even for smaller quantities. Typical customizations are indicated with a green dot at column end. Please contact us for any customization request.

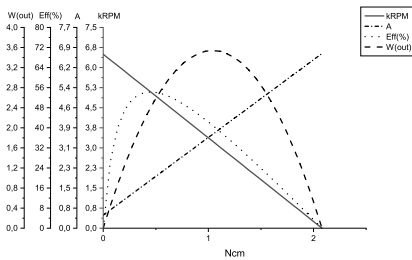
MOTOR DATA

Model number	LS5FN-3019-CVC	LS5FN-15145-CVC	LS5FN-3035-CC	LS5FN-16120-CVC	C	
Diameter	mm	29.2	29.2	29.2	●	
Length	mm	37.5	37.5	37.5	●	
Nominal voltage	V	2.4	12	12	24	●
No load current	A	0.5	0.06	0.5	0.08	●
Nominal current	A	1.8	0.3	2.9	0.5	●
Start/Stall current	A	6.7	1	14	2.6	●
No load speed	rpm	6500	4300	18000	9700	●
Nominal speed	rpm	4900	3400	15000	8200	●
Nominal torque	mNm	4.4	4.8	16	8	●
Start/Stall torque	mNm	21	25	85	56	●
Nominal power	W	2.3	1.7	24	7	●
Efficiency	%	53	66	68	66	●

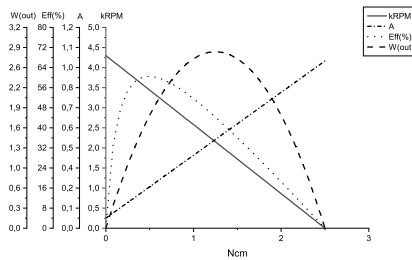
COMMON MOTOR DATA

Shaft diameter	mm	2.3	●
Number of pole pairs		1	
Number of commutator segments		5	
Weight	g	110	
Service life	hrs	500 to 1000	
Operating temperature	°C	-10 to +60	●
Housing material		Galvanized steel	
Shaft material		High-carbon steel	●
Magnet material		Ferrite	
IP rating		IP40	
Motor insulation class		Level A	●

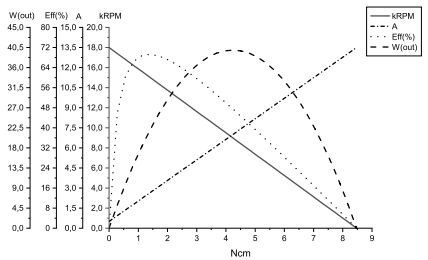
MOTOR DATA GRAPH - LS5FN-3019-CVC



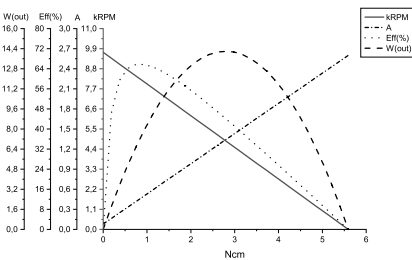
MOTOR DATA GRAPH - LS5FN-15145-CVC



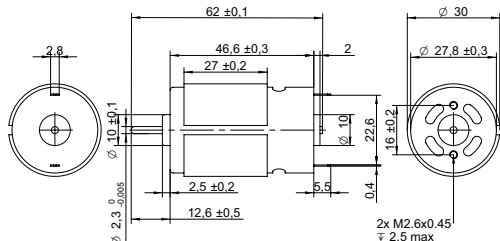
MOTOR DATA GRAPH - LS5FN-3035-CC



MOTOR DATA GRAPH - LS5FN-16120-CVC



DRAWING (mm)



PHOTO

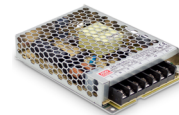


MODEL NO. DESIGNATION

MODEL	-	BRUSH TYPE	-	ELECTRONIC COMPONENT
		C: Carbon brush M: Metal brush		C: Capacitor V: Varsitor

Example: JD3-5520-CC

OPTIONS POWER SUPPLIES



● C = customizations are offered on demand even for smaller quantities. Typical customizations are indicated with a green dot at column end. Please contact us for any customization request.

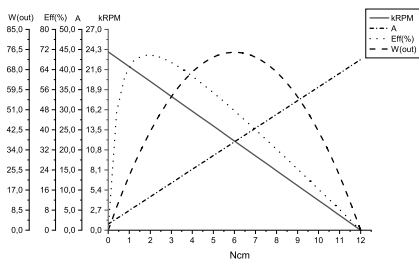
MOTOR DATA

Model number	JD3-5520-CC	JD3-4532-CC	JD3-14260-CVC	JD3-24135-CVC	C
Diameter	mm 30	30	30	30	●
Length	mm 46.6	46.6	46.6	46.6	
Nominal voltage	V 7.2	9.6	12	12	●
No load current	A 1.5	0.8	0.06	0.35	●
Nominal current	A 8.2	5.6	0.2	2	●
Start/Stall current	A 43	36	0.9	13	●
No load speed	rpm 24000	20000	3000	13000	●
Nominal speed	rpm 20000	17000	2300	11000	●
Nominal torque	mNm 19	24	6.3	16	●
Start/Stall torque	mNm 120	160	33	120	●
Nominal power	W 38	39	1.5	18	●
Efficiency	% 66	72	60	77	

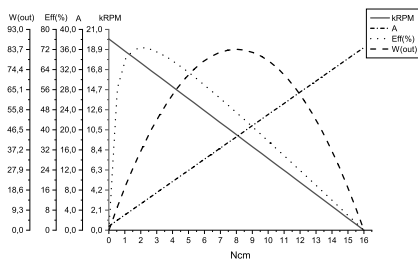
COMMON MOTOR DATA

Shaft diameter	mm 2.3	●
Number of pole pairs	1	
Number of commutator segments	3	
Weight	g 150	
Service life	hrs 500 to 1000	
Operating temperature	°C -10 to +60	●
Housing material	Galvanized steel	
Shaft material	High-carbon steel	●
Magnet material	Ferrite	
IP rating	IP40	
Motor insulation class	Level A	●

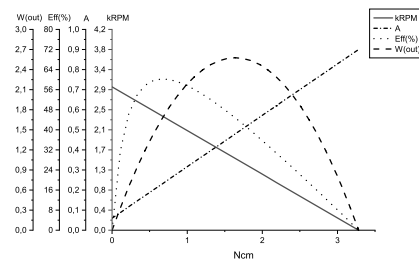
MOTOR DATA GRAPH - JD3-5520-CC



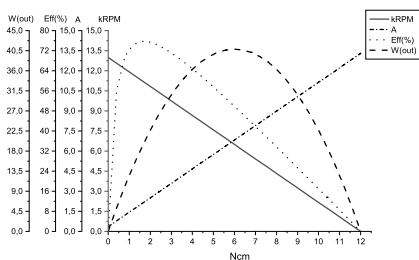
MOTOR DATA GRAPH - JD3-4532-CC



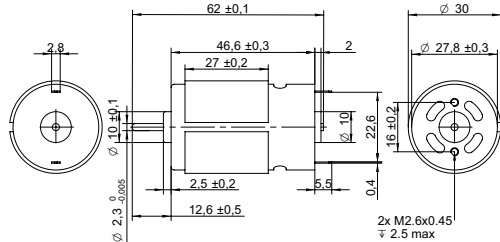
MOTOR DATA GRAPH - JD3-14260-CVC



MOTOR DATA GRAPH - JD3-24135-CVC



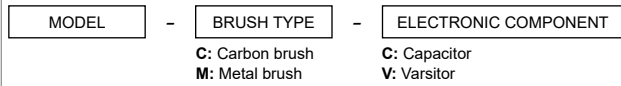
DRAWING (mm)



PHOTO



MODEL NO. DESIGNATION



Example: JD5-14200-CVC

OPTIONS POWER SUPPLIES

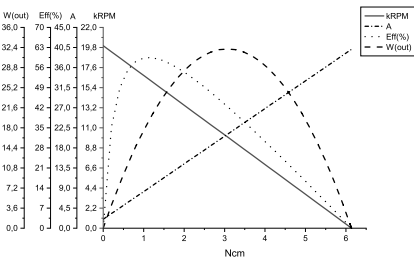


● C = customizations are offered on demand even for smaller quantities. Typical customizations are indicated with a green dot at column end. Please contact us for any customization request.

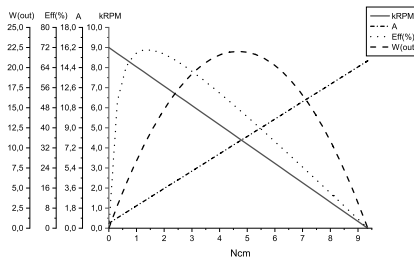
MOTOR DATA					C
Model number		JD5-14200-CVC	JD5-3723-CVC	JD5-2655-CVC	JD5-18115-CVC
Diameter	mm	30	30	30	30
Length	mm	46.6	46.6	46.6	46.6
Nominal voltage	V	3.6	6	12	24
No load current	A	2	0.45	0.15	0.09
Nominal current	A	8.9	2.5	0.9	0.4
Start/Stall current	A	40	15	4.8	2.8
No load speed	rpm	20000	9000	7200	7200
Nominal speed	rpm	16000	7500	5900	6300
Nominal torque	mNm	11	13	12	11
Start/Stall torque	mNm	61	94	78	88
Nominal power	W	19	11	7.5	7.2
Efficiency	%	59	72	73	74

COMMON MOTOR DATA			C
Shaft diameter	mm	2.3	●
Number of pole pairs		1	
Number of commutator segments		5	
Weight	g	150	
Service life	hrs	500 to 1000	
Operating temperature	°C	-10 to +60	●
Housing material		Galvanized steel	
Shaft material		High-carbon steel	●
Magnet material		Ferrite	
IP rating		IP40	
Motor insulation class		Level A	●

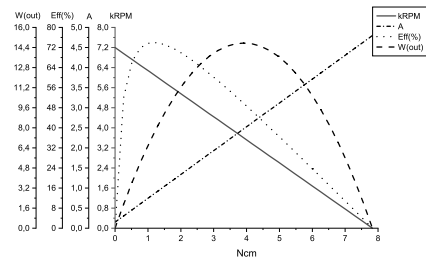
MOTOR DATA GRAPH - JD5-14200-CVC



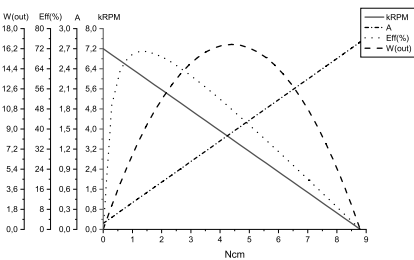
MOTOR DATA GRAPH - JD5-3723-CVC



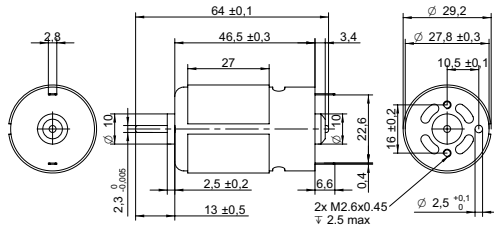
MOTOR DATA GRAPH - JD5-2655-CVC



MOTOR DATA GRAPH - JD5-18115-CVC



DRAWING (mm)



PHOTO



MODEL NO. DESIGNATION

MODEL	-	BRUSH TYPE	-	ELECTRONIC COMPONENT
		C: Carbon brush M: Metal brush		C: Capacitor V: Varistor

Example: JD3FN-5518-CC

OPTIONS POWER SUPPLIES



● C = customizations are offered on demand even for smaller quantities. Typical customizations are indicated with a green dot at column end. Please contact us for any customization request.

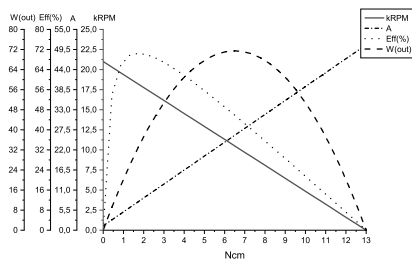
MOTOR DATA

				C
Model number		JD3FN-5518-CC	JD3FN-5025-CC	
Diameter	mm	29.2	29.2	
Length	mm	46.5	46.5	
Nominal voltage	V	6	9.6	●
No load current	A	1.2	1.4	●
Nominal current	A	8.8	7.8	●
Start/Stall current	A	51	48	●
No load speed	rpm	21000	26000	●
Nominal speed	rpm	18000	22000	●
Nominal torque	mNm	21	23	●
Start/Stall torque	mNm	130	160	●
Nominal power	W	38	52	●
Efficiency	%	72	70	●

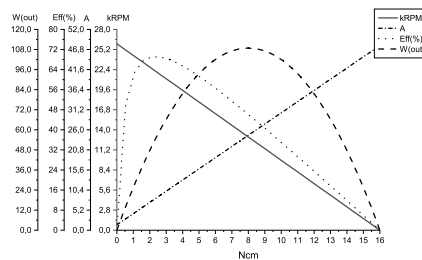
COMMON MOTOR DATA

				C
Shaft diameter	mm	2.3		●
Number of pole pairs		1		
Number of commutator segments		3		
Weight	g	150		
Service life	hrs	500 to 1000		
Operating temperature	°C	-10 to +60		●
Housing material		Galvanized steel		
Shaft material		High-carbon steel		●
Magnet material		Ferrite		
IP rating		IP40		
Motor insulation class		Level A		●

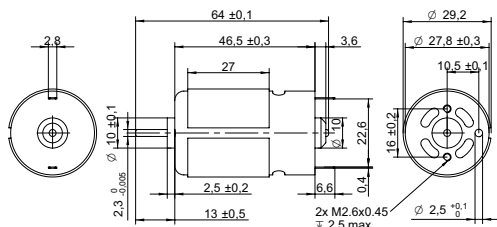
MOTOR DATA GRAPH - JD3FN-5518-CC



MOTOR DATA GRAPH - JD3FN-5025-CC



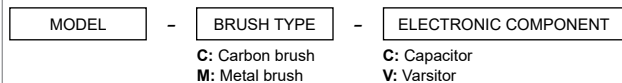
DRAWING (mm)



PHOTO



MODEL NO. DESIGNATION



Example: JD5FN-3230-CVC

OPTIONS POWER SUPPLIES



● C = customizations are offered on demand even for smaller quantities. Typical customizations are indicated with a green dot at column end. Please contact us for any customization request.

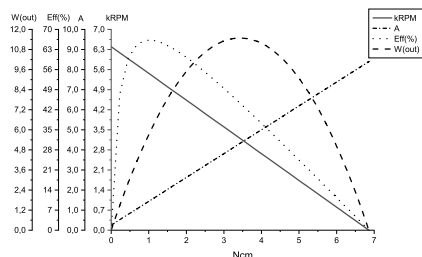
MOTOR DATA

Model number	JD5FN-3230-CVC	JC5FN-2655-CVC	JD5FN-14180-CVC	JD5FN-2466-CVC	C
Diameter	mm 29.2	29.2	29.2	29.2	●
Length	mm 46.5	46.5	46.5	46.5	
Nominal voltage	V 6	12	24	30	●
No load current	A 0.25	0.16	0.06	0.18	●
Nominal current	A 1.46	1	0.1	1.1	●
Start/Stall current	A 8.4	6.3	1.2	9.1	●
No load speed	rpm 6400	6700	4200	16000	●
Nominal speed	rpm 5600	5700	3900	14000	●
Nominal torque	mNm 10	15	6.2	17	●
Start/Stall torque	mNm 69	110	61	160	●
Nominal power	W 6.1	8.9	2.6	25	●
Efficiency	% 70	71	77	77	

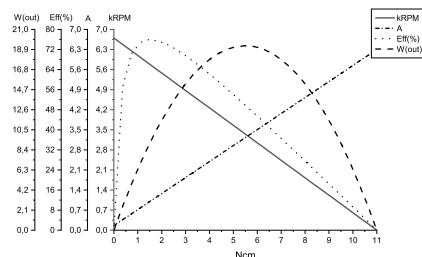
COMMON MOTOR DATA

Shaft diameter	mm 2.3	●
Number of pole pairs	1	
Number of commutator segments	5	
Weight	g 150	
Service life	hrs 500 to 1000	
Operating temperature	°C -10 to +60	●
Housing material	Galvanized steel	
Shaft material	High-carbon steel	●
Magnet material	Ferrite	
IP rating	IP40	
Motor insulation class	Level A	●

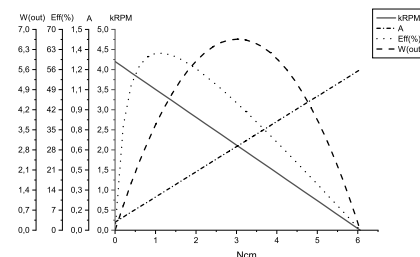
MOTOR DATA GRAPH - JD5FN-3230-CVC



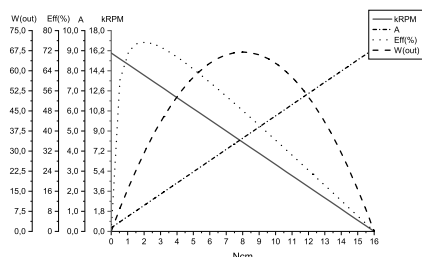
MOTOR DATA GRAPH - JC5FN-2655-CVC



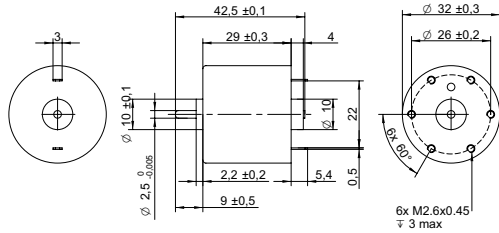
MOTOR DATA GRAPH - JD5FN-14180-CVC



MOTOR DATA GRAPH - JD5FN-2466-CVC



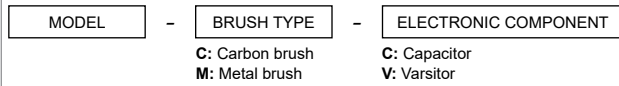
DRAWING (mm)



PHOTO



MODEL NO. DESIGNATION



Example: GR-3548-CVC

OPTIONS POWER SUPPLIES

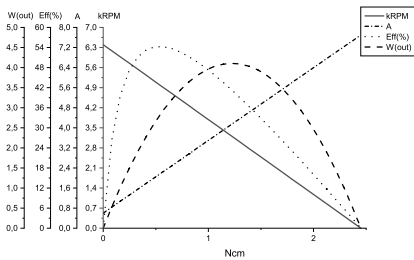


● C = customizations are offered on demand even for smaller quantities. Typical customizations are indicated with a green dot at column end. Please contact us for any customization request.

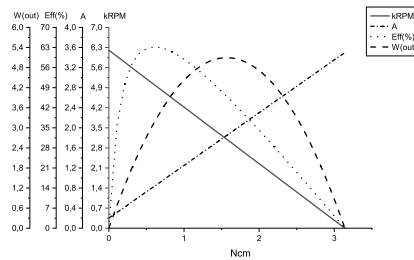
MOTOR DATA					C
Model number		GR-3548-CVC	GR-24130-CVC	GR-18260-CVC	GR-12530-CVC
Diameter	mm	32	32	32	32
Length	mm	29	29	29	29
Nominal voltage	V	2.4	6	12	24
No load current	A	0.6	0.2	0.12	0.06
Nominal current	A	2.2	0.8	0.5	0.2
Start/Stall current	A	7.7	3.5	2.2	0.9
No load speed	rpm	6400	6200	6200	6200
Nominal speed	rpm	5000	5100	5100	5000
Nominal torque	mNm	5.4	5.3	5.9	6.1
Start/Stall torque	mNm	25	31	33	31
Nominal power	W	2.8	2.9	3.1	3.2
Efficiency	%	54	61	56	62

COMMON MOTOR DATA					C
Shaft diameter	mm	2.5			●
Number of pole pairs		1			
Number of commutator segments		3			
Weight	g	100			
Service life	hrs	500 to 1000			
Operating temperature	°C	-10 to +60			●
Housing material		Galvanized steel			
Shaft material		High-carbon steel			●
Magnet material		Ferrite			
IP rating		IP40			
Motor insulation class		Level A			●

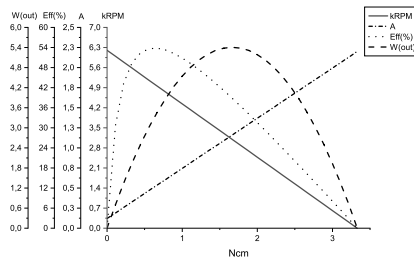
MOTOR DATA GRAPH - GR-3548-CVC



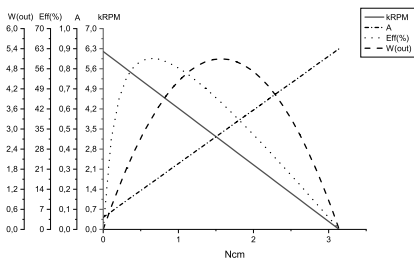
MOTOR DATA GRAPH - GR-24130-CVC



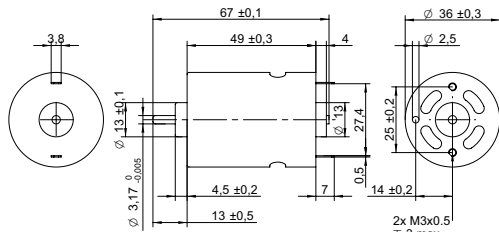
MOTOR DATA GRAPH - GR-18260-CVC



MOTOR DATA GRAPH - GR-12530-CVC



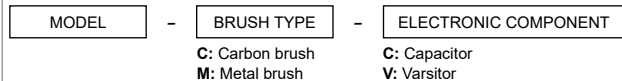
DRAWING (mm)



PHOTO



MODEL NO. DESIGNATION



Example: HS3SFN-7523-CC

OPTIONS POWER SUPPLIES

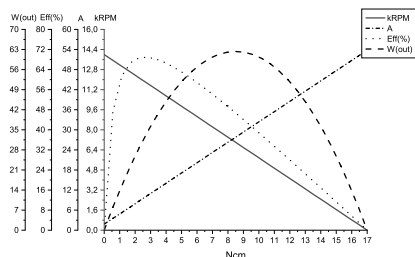


● C = customizations are offered on demand even for smaller quantities. Typical customizations are indicated with a green dot at column end. Please contact us for any customization request.

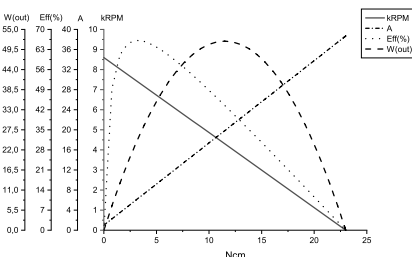
MOTOR DATA					C
Model number		HS3SFN-7523-CC	HD3SFN-6040-CC	HS3SFN-22240-CVC	HD3SFN-6035-CC
Diameter	mm	36	36	36	36
Length	mm	49	49	49	49
Nominal voltage	V	4.8	6	12	12
No load current	A	1.8	1	0.12	1
Nominal current	A	9.1	5.9	0.4	8.3
Start/Stall current	A	54	39	2.3	56
No load speed	rpm	14000	8600	3100	21000
Nominal speed	rpm	12000	7300	2600	17000
Nominal torque	mNm	24	32	12	37
Start/Stall torque	mNm	170	230	78	290
Nominal power	W	29	25	3.3	67
Efficiency	%	68	70	62	68

COMMON MOTOR DATA					C
Shaft diameter	mm	3.17			●
Number of pole pairs		1			
Number of commutator segments		3			
Weight	g	220			
Service life	hrs	500 to 1000			
Operating temperature	°C	-10 to +60			●
Housing material		Galvanized steel			
Shaft material		High-carbon steel			●
Magnet material		Ferrite			
IP rating		IP40			
Motor insulation class		Level A			●

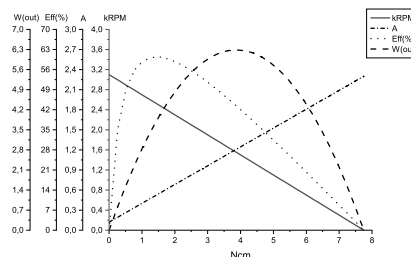
MOTOR DATA GRAPH - HS3SFN-7523-CC



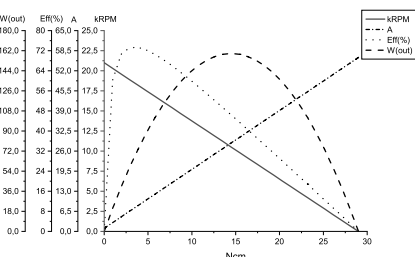
MOTOR DATA GRAPH - HD3SFN-6040-CC



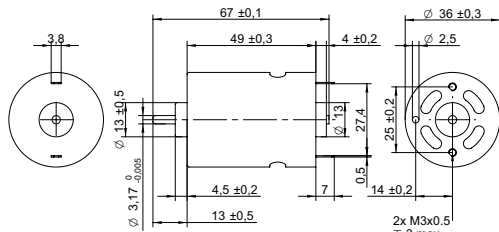
MOTOR DATA GRAPH - HS3SFN-22240-CVC



MOTOR DATA GRAPH - HD3SFN-6035-CC



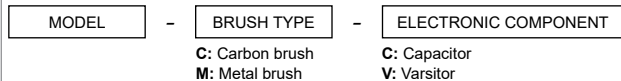
DRAWING (mm)



PHOTO



MODEL NO. DESIGNATION



Example: HS5FN-19130-CVC

OPTIONS POWER SUPPLIES



● C = customizations are offered on demand even for smaller quantities. Typical customizations are indicated with a green dot at column end. Please contact us for any customization request.

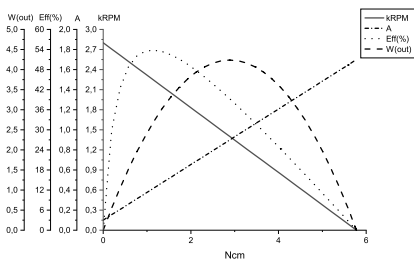
MOTOR DATA

Model number	HS5FN-19130-CVC	HP5FN-3250-CVC	HD5FN-2485-CVC	HP5FN-2670-CVC	C	
Diameter	mm	36	36	36	36	
Length	mm	49	49	49	49	
Nominal voltage	V	12	12	24	24	●
No load current	A	0.1	0.32	0.26	0.7	●
Nominal current	A	0.4	1.8	1.1	1.9	●
Start/Stall current	A	1.7	9.8	6.2	9.1	●
No load speed	rpm	2800	7400	9700	11000	●
Nominal speed	rpm	2100	6200	7900	8600	●
Nominal torque	mNm	12	22	22	31	●
Start/Stall torque	mNm	58	140	150	170	●
Nominal power	W	2.8	14	18	28	●
Efficiency	%	54	66	71	60	

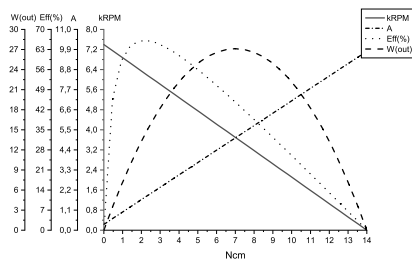
COMMON MOTOR DATA

Shaft diameter	mm	3.17	●
Number of pole pairs		1	
Number of commutator segments		5	
Weight	g	220	
Service life	hrs	500 to 1000	
Operating temperature	°C	-10 to +60	●
Housing material		Galvanized steel	
Shaft material		High-carbon steel	●
Magnet material		Ferrite	
IP rating		IP40	
Motor insulation class		Level A	●

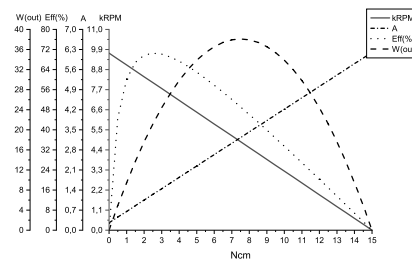
MOTOR DATA GRAPH - HS5FN-19130-CVC



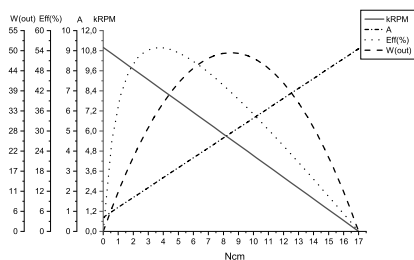
MOTOR DATA GRAPH - HP5FN-3250-CVC



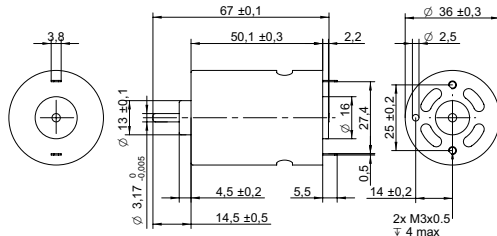
MOTOR DATA GRAPH - HD5FN-2485-CVC



MOTOR DATA GRAPH - HP5FN-2670-CVC



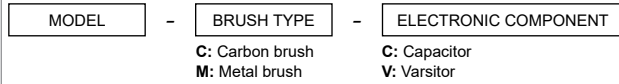
DRAWING (mm)



PHOTO



MODEL NO. DESIGNATION



Example: HS3SN-22240-CVC

OPTIONS POWER SUPPLIES



● C = customizations are offered on demand even for smaller quantities. Typical customizations are indicated with a green dot at column end. Please contact us for any customization request.

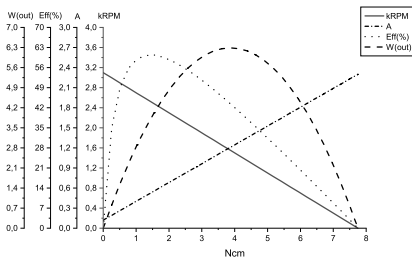
MOTOR DATA C

Model number		HS3SN-22240-CVC	HP3SN-26135-CVC	HS3SN-4070-CVC	HP3SN-5048-CVC	
Diameter	mm	36	36	36	36	
Length	mm	50.1	50.1	50.1	50.1	
Nominal voltage	V	12	12	12	12	●
No load current	A	0.11	0.2	0.5	0.86	●
Nominal current	A	0.6	1	2.9	5.4	●
Start/Stall current	A	2.1	5.4	17	33	●
No load speed	rpm	3000	5400	11000	16000	●
Nominal speed	rpm	2300	4400	9300	14000	●
Nominal torque	mNm	16	16	23	31	●
Start/Stall torque	mNm	68	110	160	210	●
Nominal power	W	3.8	8	23	44	●
Efficiency	%	58	65	65	69	

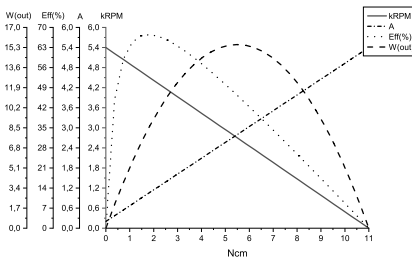
COMMON MOTOR DATA C

Shaft diameter	mm	3.17	●
Number of pole pairs		1	
Number of commutator segments		3	
Weight	g	220	
Service life	hrs	500 to 1000	
Operating temperature	°C	-10 to +60	●
Housing material		Galvanized steel	
Shaft material		High-carbon steel	●
Magnet material		Ferrite	
IP rating		IP40	
Motor insulation class		Level A	●

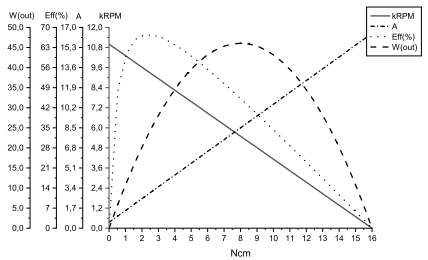
MOTOR DATA GRAPH - HS3SN-22240-CVC



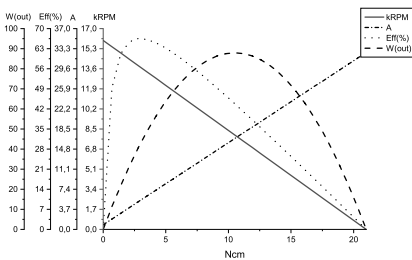
MOTOR DATA GRAPH - HP3SN-26135-CVC



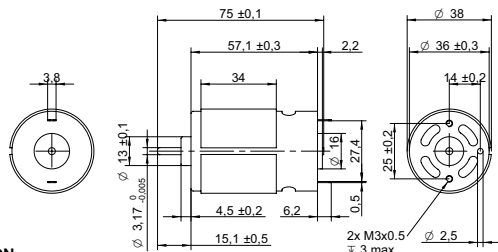
MOTOR DATA GRAPH - HS3SN-4070-CVC



MOTOR DATA GRAPH - HP3SN-5048-CVC



DRAWING (mm)



PHOTO



MODEL NO. DESIGNATION

MODEL	-	BRUSH TYPE	-	ELECTRONIC COMPONENT
		C: Carbon brush M: Metal brush		C: Capacitor V: Varsitor

Example: KP3N-7521-CC

OPTIONS POWER SUPPLIES



● C = customizations are offered on demand even for smaller quantities. Typical customizations are indicated with a green dot at column end. Please contact us for any customization request.

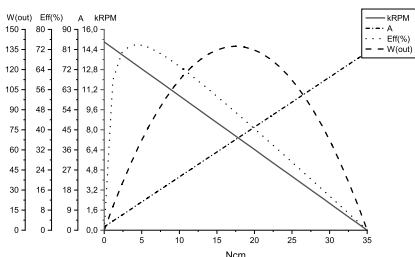
MOTOR DATA

Model number		KP3N-7521-CC	KP3N-35110-CVC	KS3N-30100-CVC	KS3N-4553-CVC	C
Diameter	mm	38	38	38	38	
Length	mm	57.1	57.1	57.1	57.1	
Nominal voltage	V	7.2	12	12	12	●
No load current	A	1.5	0.15	0.3	0.6	●
Nominal current	A	9.9	1.1	1.3	3.6	●
Start/Stall current	A	80	8.3	7.2	23	●
No load speed	rpm	15000	4500	5200	10000	●
Nominal speed	rpm	13000	3800	4300	8400	●
Nominal torque	mNm	38	24	23	35	●
Start/Stall torque	mNm	350	200	150	250	●
Nominal power	W	51	9.6	11	31	●
Efficiency	%	72	71	65	72	

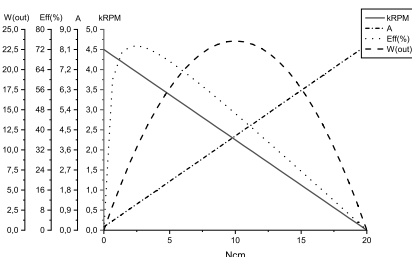
COMMON MOTOR DATA

Shaft diameter	mm	3.17	●
Number of pole pairs		1	
Number of commutator segments		3	
Weight	g	300	
Service life	hrs	500 to 1000	
Operating temperature	°C	-10 to +60	●
Housing material		Galvanized steel	
Shaft material		High-carbon steel	●
Magnet material		Ferrite	
IP rating		IP40	
Motor insulation class		Level A	●

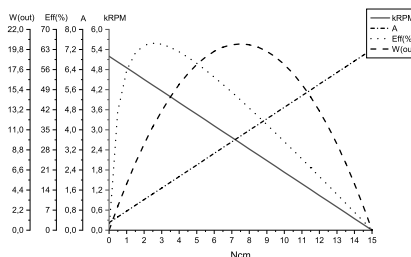
MOTOR DATA GRAPH - KP3N-7521-CC



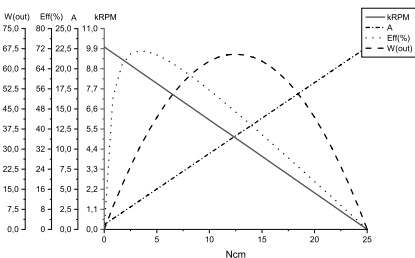
MOTOR DATA GRAPH - KP3N-35110-CVC



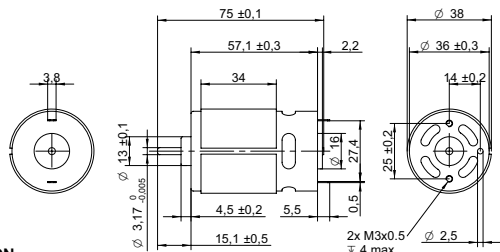
MOTOR DATA GRAPH - KS3N-30100-CVC



MOTOR DATA GRAPH - KS3N-4553-CVC



DRAWING (mm)



PHOTO

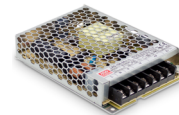


MODEL NO. DESIGNATION

MODEL	-	BRUSH TYPE	-	ELECTRONIC COMPONENT
		C: Carbon brush M: Metal brush		C: Capacitor V: Varsitor

Example: KD5N-4525-CVC

OPTIONS POWER SUPPLIES



● C = customizations are offered on demand even for smaller quantities. Typical customizations are indicated with a green dot at column end. Please contact us for any customization request.

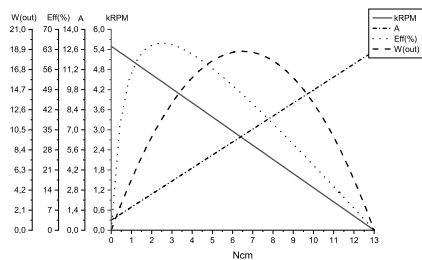
MOTOR DATA

Model number		KD5N-4525-CVC	KP5N-18150-CVC	KS5N-18130-CVC	KP5N-3732-CVC	C
Diameter	mm	38	38	38	38	
Length	mm	57.1	57.1	57.1	57.1	
Nominal voltage	V	6	24	24	12	●
No load current	A	0.7	0.95	0.09	0.28	●
Nominal current	A	2.7	0.4	0.4	1.8	●
Start/Stall current	A	13	2	2.1	14	●
No load speed	rpm	5500	3700	4000	8400	●
Nominal speed	rpm	4300	3000	3300	7200	●
Nominal torque	mNm	25	21	15	20	●
Start/Stall torque	mNm	130	120	110	180	●
Nominal power	W	11	6.6	5.4	15	●
Efficiency	%	69	69	65	71	

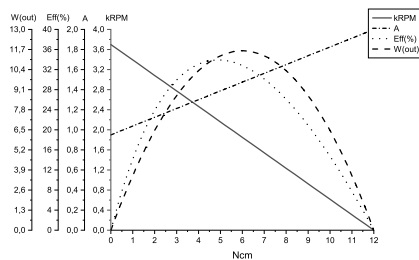
COMMON MOTOR DATA

Shaft diameter	mm	3.17	●
Number of pole pairs		1	
Number of commutator segments		5	
Weight	g	300	
Service life	hrs	500 to 1000	
Operating temperature	°C	-10 to +60	●
Housing material		Galvanized steel	
Shaft material		High-carbon steel	●
Magnet material		Ferrite	
IP rating		IP40	
Motor insulation class		Level A	●

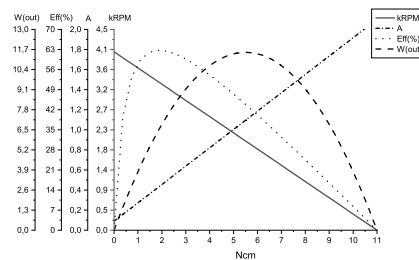
MOTOR DATA GRAPH - KD5N-4525-CVC



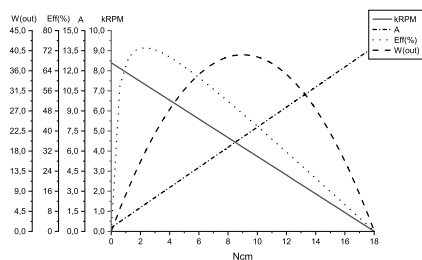
MOTOR DATA GRAPH - KP5N-18150-CVC



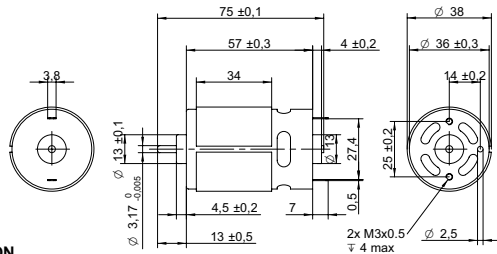
MOTOR DATA GRAPH - KS5N-18130-CVC



MOTOR DATA GRAPH - KP5N-3732-CVC



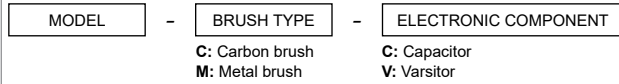
DRAWING (mm)



PHOTO



MODEL NO. DESIGNATION



Example: KD3SFN-8518-CC

OPTIONS POWER SUPPLIES



● C = customizations are offered on demand even for smaller quantities. Typical customizations are indicated with a green dot at column end. Please contact us for any customization request.

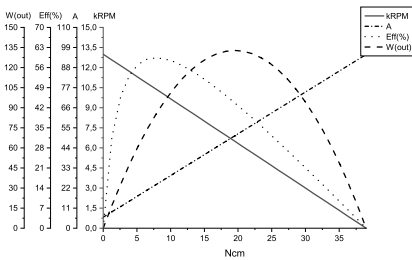
MOTOR DATA

Model number		KD3SFN-8518-CC	KS3SFN-7520F-CC	KP3SFN-8020F-CC	KV3SFN-7525F-CC	C
Diameter	mm	38	38	38	38	
Length	mm	57	57	57	57	
Nominal voltage	V	6	7.2	7.2	12	●
No load current	A	6	1.3	1.5	1.2	●
Nominal current	A	10.2	10.4	9.6	9.8	●
Start/Stall current	A	95	60	72	83	●
No load speed	rpm	13000	15000	14000	18000	●
Nominal speed	rpm	12000	12000	12000	16000	●
Nominal torque	mNm	36	42	40	57	●
Start/Stall torque	mNm	390	280	340	530	●
Nominal power	W	46	54	52	95	●
Efficiency	%	75	72	76	81	

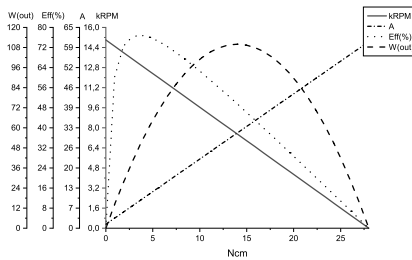
COMMON MOTOR DATA

Shaft diameter	mm	3.17	●
Number of pole pairs		1	
Number of commutator segments		3	
Weight	g	300	
Service life	hrs	500 to 1000	
Operating temperature	°C	-10 to +60	●
Housing material		Galvanized steel	
Shaft material		High-carbon steel	●
Magnet material		Ferrite	
IP rating		IP40	
Motor insulation class		Level A	●

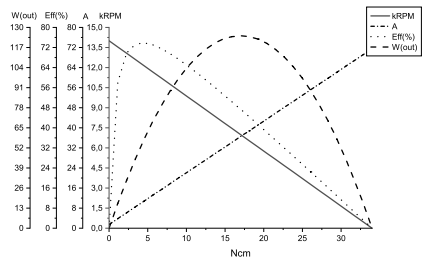
MOTOR DATA GRAPH - KD3SFN-8518-CC



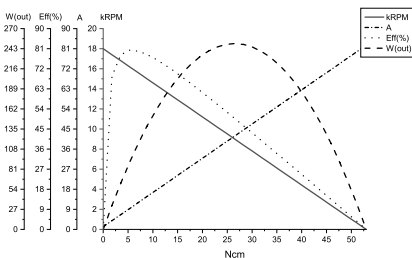
MOTOR DATA GRAPH - KS3SFN-7520F-CC



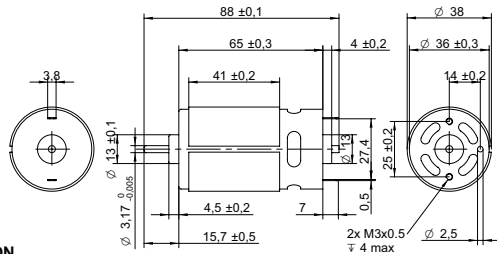
MOTOR DATA GRAPH - KP3SFN-8020F-CC



MOTOR DATA GRAPH - KV3SFN-7525F-CC



DRAWING (mm)



PHOTO



MODEL NO. DESIGNATION

MODEL	-	BRUSH TYPE	-	ELECTRONIC COMPONENT
		C: Carbon brush M: Metal brush		C: Capacitor V: Varsitor

Example: ND3SFN-4570-CVC

OPTIONS POWER SUPPLIES



● C = customizations are offered on demand even for smaller quantities. Typical customizations are indicated with a green dot at column end. Please contact us for any customization request.

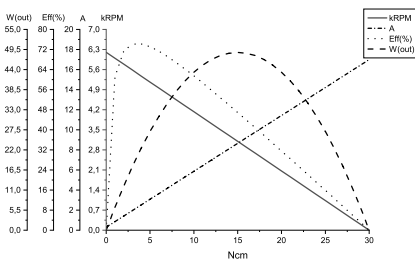
MOTOR DATA

Model number		ND3SFN-4570-CVC	ND3SFN-4565-CVC	NC3SFN-6035-CVC	C
Diameter	mm	38	38	38	
Length	mm	65	65	65	
Nominal voltage	V	12	12	12	●
No load current	A	0.3	0.5	1	●
Nominal current	A	2.2	2.6	5.6	●
Start/Stall current	A	17	18	51	●
No load speed	rpm	6200	6700	12000	●
Nominal speed	rpm	5400	5800	11000	●
Nominal torque	mNm	34	36	46	●
Start/Stall torque	mNm	300	290	450	●
Nominal power	W	19	22	52	●
Efficiency	%	74	71	76	

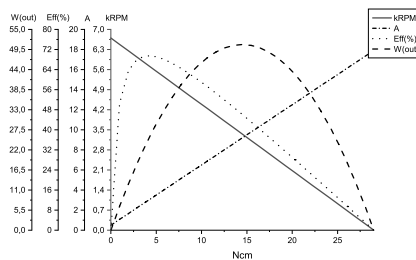
COMMON MOTOR DATA

Shaft diameter	mm	3.17	●
Number of pole pairs		1	
Number of commutator segments		3	
Weight	g	300	
Service life	hrs	500 to 1000	
Operating temperature	°C	-10 to +60	●
Housing material		Galvanized steel	
Shaft material		High-carbon steel	●
Magnet material		Ferrite	
IP rating		IP40	
Motor insulation class		Level A	●

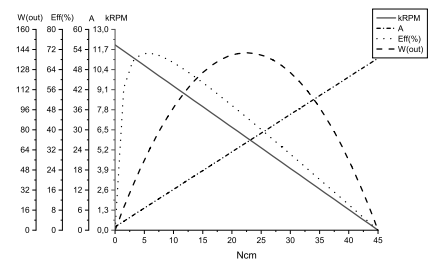
MOTOR DATA GRAPH - ND3SFN-4570-CVC



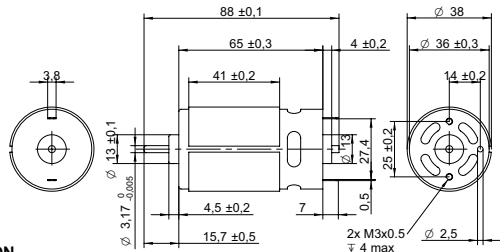
MOTOR DATA GRAPH - ND3SFN-4565-CVC



MOTOR DATA GRAPH - NC3SFN-6035-CVC



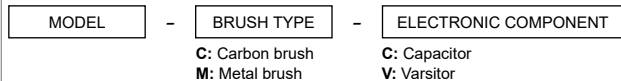
DRAWING (mm)



PHOTO

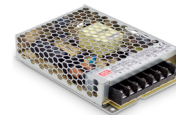


MODEL NO. DESIGNATION



Example: NC5FN-3550-CVC

OPTIONS POWER SUPPLIES



● C = customizations are offered on demand even for smaller quantities. Typical customizations are indicated with a green dot at column end. Please contact us for any customization request.

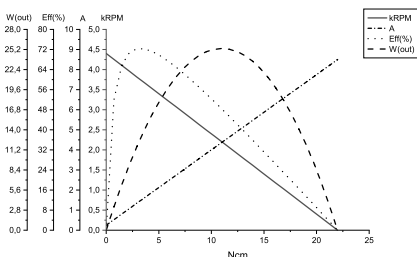
MOTOR DATA

Model number	NC5FN-3550-CVC	ND5FN-16190-CVC	ND5FN-3738-CVC	NC5FN-3545-CVC	C
Diameter	mm	38	38	38	
Length	mm	65	65	65	
Nominal voltage	V	12	24	24	●
No load current	A	0.25	0.04	0.4	●
Nominal current	A	1.4	2.2	2.6	●
Start/Stall current	A	9	1.1	23	●
No load speed	rpm	4400	2750	12000	●
Nominal speed	rpm	3700	2300	11000	●
Nominal torque	mNm	31	12	44	●
Start/Stall torque	mNm	220	90	410	●
Nominal power	W	12	2.9	51	●
Efficiency	%	72	70	77	●

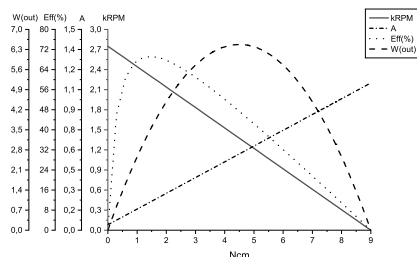
COMMON MOTOR DATA

Shaft diameter	mm	3.17	●
Number of pole pairs		1	
Number of commutator segments		5	
Weight	g	300	
Service life	hrs	500 to 1000	
Operating temperature	°C	-10 to +60	●
Housing material		Galvanized steel	
Shaft material		High-carbon steel	●
Magnet material		Ferrite	
IP rating		IP40	
Motor insulation class		Level A	●

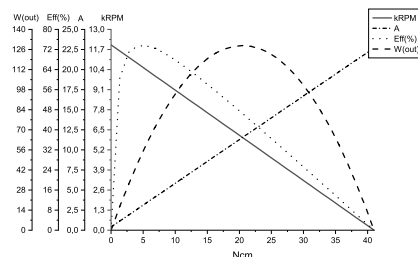
MOTOR DATA GRAPH - NC5FN-3550-CVC



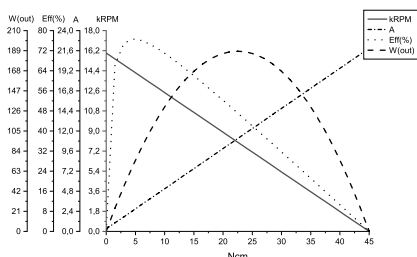
MOTOR DATA GRAPH - ND5FN-16190-CVC



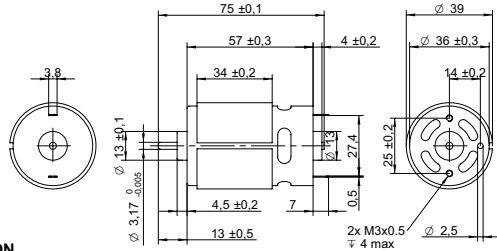
MOTOR DATA GRAPH - ND5FN-3738-CVC



MOTOR DATA GRAPH - NC5FN-3545-CVC



DRAWING (mm)



PHOTO



MODEL NO. DESIGNATION

MODEL	-	BRUSH TYPE	-	ELECTRONIC COMPONENT
		C: Carbon brush M: Metal brush		C: Capacitor V: Varistor

Example: KS5FN-2462-CVC

OPTIONS POWER SUPPLIES



● C = customizations are offered on demand even for smaller quantities. Typical customizations are indicated with a green dot at column end. Please contact us for any customization request.

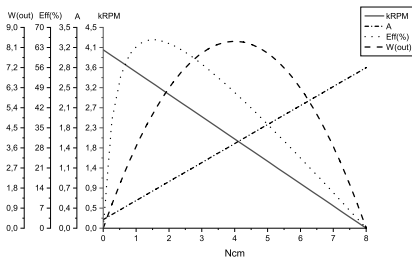
MOTOR DATA

Model number	KS5FN-2462-CVC	KC5FN-5021F-CC	KP5FN-22105-CVC	C
Diameter	mm 39	39	39	
Length	mm 57	57	57	
Nominal voltage	V 12	24	28	●
No load current	A 0.15	1.3	0.12	●
Nominal current	A 0.6	7.1	0.7	●
Start/Stall current	A 2.8	57	4.1	●
No load speed	rpm 4000	23000	6200	●
Nominal speed	rpm 3100	21000	5200	●
Nominal torque	mNm 14	53	24	●
Start/Stall torque	mNm 80	520	180	●
Nominal power	W 4.6	120	13	●
Efficiency	% 63	71	73	

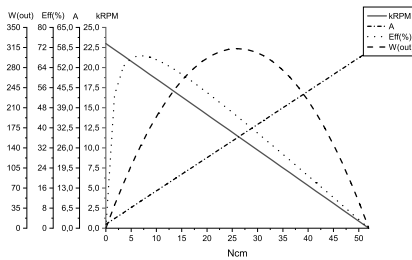
COMMON MOTOR DATA

Shaft diameter	mm 3.17	●
Number of pole pairs	1	
Number of commutator segments	5	
Weight	g 300	
Service life	hrs 500 to 1000	
Operating temperature	°C -10 to +60	●
Housing material	Galvanized steel	
Shaft material	High-carbon steel	●
Magnet material	Ferrite	
IP rating	IP40	
Motor insulation class	Level A	●

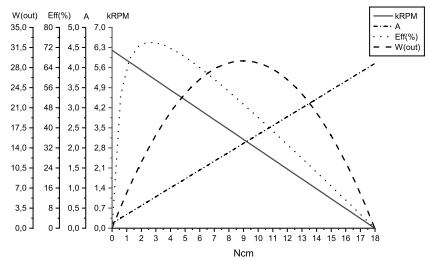
MOTOR DATA GRAPH - KS5FN-2462-CVC



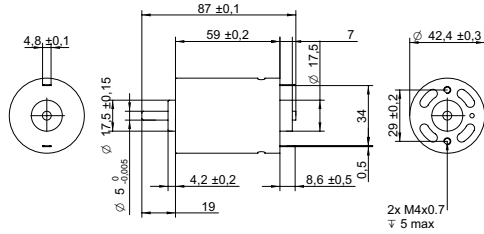
MOTOR DATA GRAPH - KC5FN-5021F-CC



MOTOR DATA GRAPH - KP5FN-22105-CVC



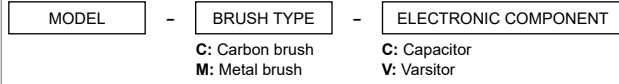
DRAWING (mm)



PHOTO



MODEL NO. DESIGNATION



Example: 755-8512F-C

OPTIONS POWER SUPPLIES

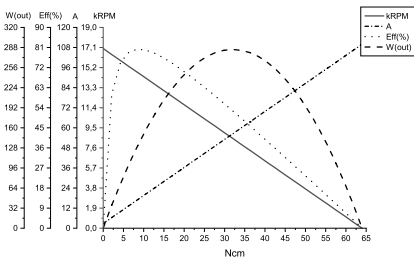


● C = customizations are offered on demand even for smaller quantities. Typical customizations are indicated with a green dot at column end. Please contact us for any customization request.

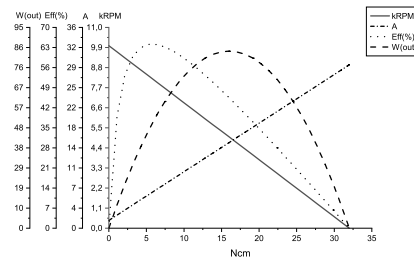
MOTOR DATA					C
Model number		755-8512F-C	755-5027F-C	755-3262-C	755-19175-C
Diameter	mm	42.4	42.4	42.4	42.4
Length	mm	59	59	59	59
Nominal voltage	V	9.6	12	24	36
No load current	A	2.8	1.4	0.45	0.18
Nominal current	A	19.8	4.9	2.1	0.6
Start/Stall current	A	110	29	12	2.7
No load speed	rpm	17000	10000	8900	4800
Nominal speed	rpm	14000	8400	7400	3900
Nominal torque	mNm	98	46	43	34
Start/Stall torque	mNm	640	320	300	180
Nominal power	W	140	41	34	14
Efficiency	%	76	71	70	64

COMMON MOTOR DATA					C
Shaft diameter	mm	5			●
Number of pole pairs		1			
Number of commutator segments		5			
Weight	g	370			
Service life	hrs	500 to 1000			
Operating temperature	°C	-10 to +60			●
Housing material		Galvanized steel			
Shaft material		High-carbon steel			●
Magnet material		Ferrite			
IP rating		IP40			
Motor insulation class		Level A			●

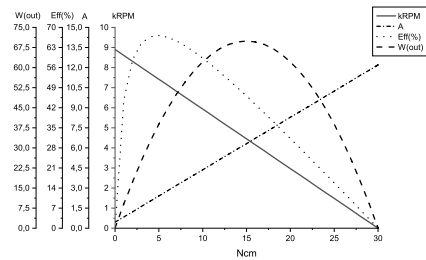
MOTOR DATA GRAPH - 755-8512F-C



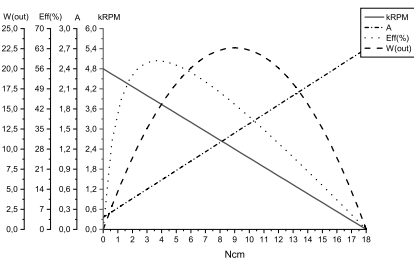
MOTOR DATA GRAPH - 755-5027F-C



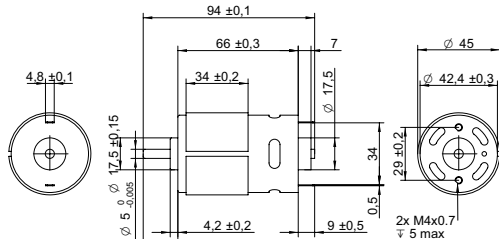
MOTOR DATA GRAPH - 755-3262-C



MOTOR DATA GRAPH - 755-19175-C



DRAWING (mm)



PHOTO



MODEL NO. DESIGNATION

MODEL	-	BRUSH TYPE	-	ELECTRONIC COMPONENT
		C: Carbon brush M: Metal brush		C: Capacitor V: Varsitor

Example: 770-4087-CC

OPTIONS POWER SUPPLIES



● C = customizations are offered on demand even for smaller quantities. Typical customizations are indicated with a green dot at column end. Please contact us for any customization request.

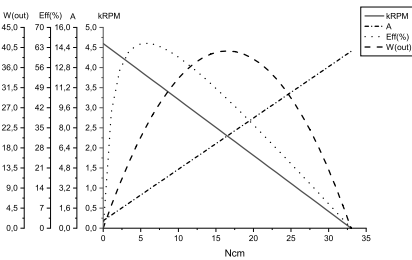
MOTOR DATA

Model number	770-4087-CC	770-7040-CC	770-8525F-CC	770-32165-CC	C
Diameter	mm 45	45	45	45	
Length	mm 66	66	66	66	
Nominal voltage	V 12	12	12	24	●
No load current	A 0.6	1.3	1.8	0.22	●
Nominal current	A 2.8	6	12.1	1.3	●
Start/Stall current	A 14	57	83	8.6	●
No load speed	rpm 4600	9700	16000	4700	●
Nominal speed	rpm 3500	8400	14000	3900	●
Nominal torque	mNm 56	59	80	53	●
Start/Stall torque	mNm 330	600	590	400	●
Nominal power	W 21	53	110	22	●
Efficiency	% 63	73	79	74	

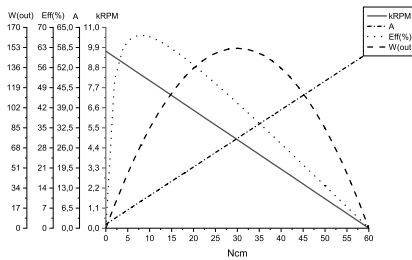
COMMON MOTOR DATA

Shaft diameter	mm	5	●
Number of pole pairs		1	
Number of commutator segments		3	
Weight	g	480	
Service life	hrs	500 to 1000	
Operating temperature	°C	-10 to +60	●
Housing material		Galvanized steel	
Shaft material		High-carbon steel	●
Magnet material		Ferrite	
IP rating		IP40	
Motor insulation class		Level A	●

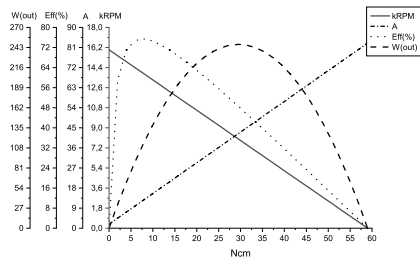
MOTOR DATA GRAPH - 770-4087-CC



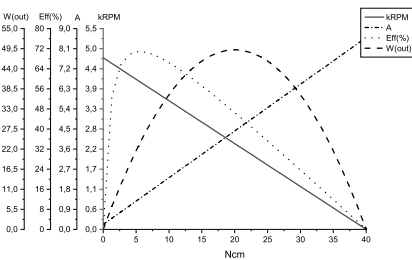
MOTOR DATA GRAPH - 770-7040-CC



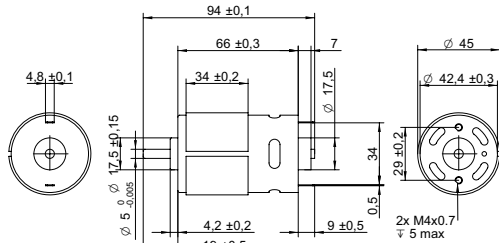
MOTOR DATA GRAPH - 770-8525F-CC



MOTOR DATA GRAPH - 770-32165-CC



DRAWING (mm)



PHOTO



MODEL NO. DESIGNATION

MODEL	-	BRUSH TYPE	-	ELECTRONIC COMPONENT
		C: Carbon brush M: Metal brush		C: Capacitor V: Varsitor

Example: 775-9008F-CC

OPTIONS POWER SUPPLIES



● C = customizations are offered on demand even for smaller quantities. Typical customizations are indicated with a green dot at column end. Please contact us for any customization request.

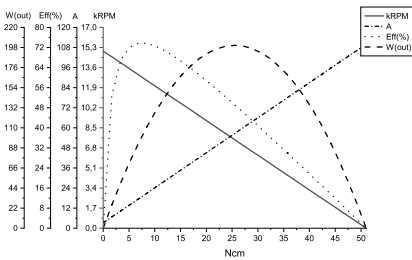
MOTOR DATA

Model number	775-9008F-CC	775-9009F-C-CC	775-8013F-C-CC	775-5520F-CC	C	
Diameter	mm	45	45	45		
Length	mm	66	66	66		
Nominal voltage	V	7.2	12	18	24	●
No load current	A	3.2	2.8	3	1.7	●
Nominal current	A	20.1	21.1	15.8	10.7	●
Start/Stall current	A	110	140	110	68	●
No load speed	rpm	15000	21000	22000	21000	●
Nominal speed	rpm	12000	18000	19000	18000	●
Nominal torque	mNm	80	100	100	94	●
Start/Stall torque	mNm	510	810	840	710	●
Nominal power	W	100	190	200	180	●
Efficiency	%	72	77	70	71	

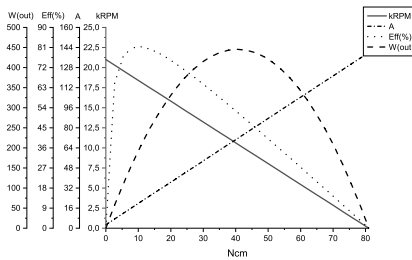
COMMON MOTOR DATA

Shaft diameter	mm	5	●
Number of pole pairs		1	
Number of commutator segments		5	
Weight	g	480	
Service life	hrs	500 to 1000	
Operating temperature	°C	-10 to +60	●
Housing material		Galvanized steel	
Shaft material		High-carbon steel	●
Magnet material		Ferrite	
IP rating		IP40	
Motor insulation class		Level A	●

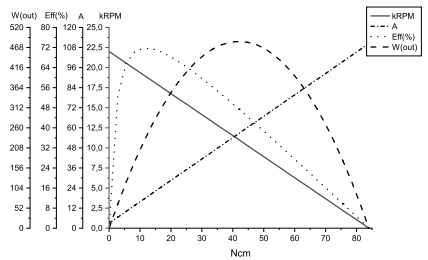
MOTOR DATA GRAPH - 775-9008F-CC



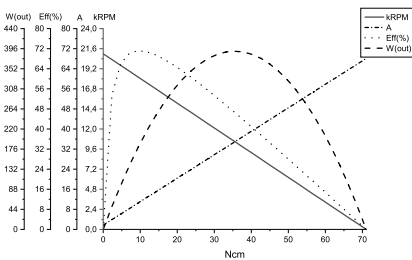
MOTOR DATA GRAPH - 775-9009F-C-CC



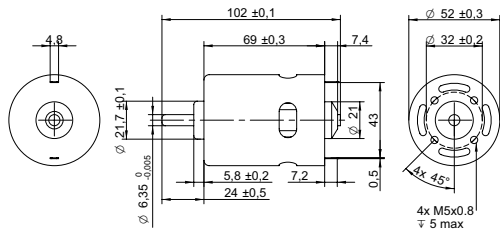
MOTOR DATA GRAPH - 775-8013F-C-CC



MOTOR DATA GRAPH - 775-5520F-C-CC



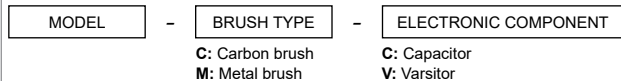
DRAWING (mm)



PHOTO



MODEL NO. DESIGNATION



Example: 987-5025F-C

OPTIONS POWER SUPPLIES



● C = customizations are offered on demand even for smaller quantities. Typical customizations are indicated with a green dot at column end. Please contact us for any customization request.

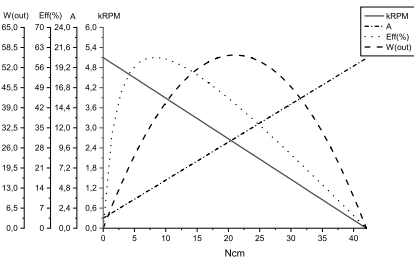
MOTOR DATA

Model number	987-5025F-C	987-8012F-C	987-8010F-C	987-5524F-C	C
Diameter	mm 52	52	52	52	
Length	mm 69	69	69	69	
Nominal voltage	V 12	12	12	24	●
No load current	A 1.2	2	2.3	0.95	●
Nominal current	A 4.8	13.1	11.9	6.3	●
Start/Stall current	A 20	80	83	45	●
No load speed	rpm 5100	11000	13000	11000	●
Nominal speed	rpm 4000	9000	11100	9700	●
Nominal torque	mNm 84	110	88	110	●
Start/Stall torque	mNm 420	790	680	860	●
Nominal power	W 35	110	100	110	●
Efficiency	% 63	68	72	74	

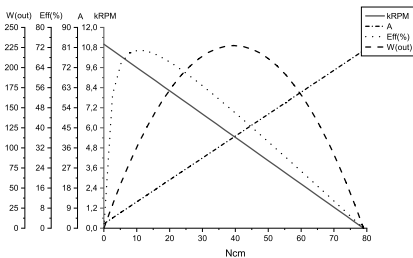
COMMON MOTOR DATA

Shaft diameter	mm 6.35	C
Number of pole pairs	1	
Number of commutator segments	7	
Weight	g 660	
Service life	hrs 500 to 1000	
Operating temperature	°C -10 to +60	●
Housing material	Galvanized steel	
Shaft material	High-carbon steel	●
Magnet material	Ferrite	
IP rating	IP40	
Motor insulation class	Level A	●

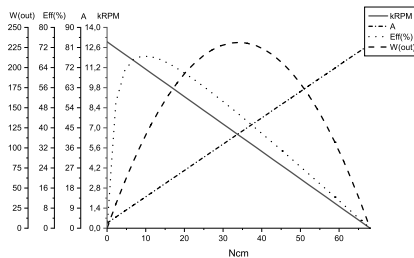
MOTOR DATA GRAPH - 987-5025F-C



MOTOR DATA GRAPH - 987-8012F-C



MOTOR DATA GRAPH - 987-8010F-C



MOTOR DATA GRAPH - 987-5524F-C

