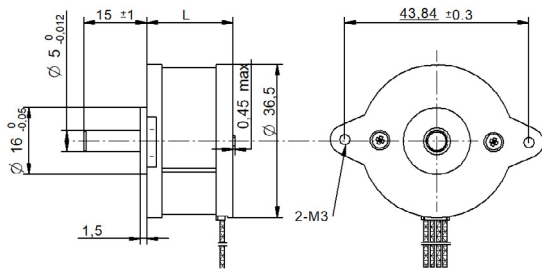


SHW36-09 Series Ø 36 mm

DRAWING (mm)



MODEL NAME DESIGNATION

SHW3520 - STEP ANGLE - CURRENT

Example: SHW35-09-100



PHOTO



OPTIONS MOTOR DRIVERS AND POWER SUPPLIES



MOTOR FEATURES

Step angle	0.9
Step angle accuracy	± 5% full step no load
Shaft material	X8CrNiS18-9 303
Bearing type	Ball bearing
Radial play	0.02 mm 450 g
Axial play	0.08 mm 450 g
Max. radial force	5.5N 20 mm from shaft
Max. axial force	2.5N
Dielectric strength	500VAC 1 sec.
Insulation resistance	100MΩ 500VDC
Ambient temperature	-20° - (+50°)
Insulation class	Class B
IP rating	IP30
Connection leads	UL 1061 AWG28 300 mm
Connector	Not in standard version

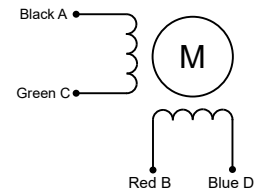
CUSTOMIZATION EXAMPLES

- Shaft configurations
- Bearing type and preload
- Temperature range
- IP rating
- Winding and performance optimization
- Cabling and harness
- Gear box to motor combinations
- Encoder to motor combinations

OPTIONS

- Stepper motor drivers Transmotec DS series
- Power supplies Transmotec LRS series

EXCITATION SEQUENCE TABLE



CW	A	C	B	D
1	●		●	
2		●	●	
3		●		●
4	●			●
1	●		●	

● = + Polarity

MOTOR DATA

Graph	A			
Motor model	SHW3620-09-080			
Holding torque Nm	0.09			
Detent torque Nm	-			
Rotor inertia gcm ²	19.6			
Current phase A	0.80			
Resistance phase Ω	5.50			
Inductance mH	4.8			
Length mm	20.5			
Weight Kg	0.900			

SPEED | TORQUE PERFORMANCE GRAPH PULL OUT

Graph	A			
Supply voltage VDC	24			
Current phase A	0.8			

